

Manual rev20

DCMburner v6.x



Contact: info@sup-c.com

Website: <https://sup-c.com/>

Table of contents

Software Prerequisites	5
<i>Minimum System Requirements</i>	<i>5</i>
OS (Operating System).....	5
<i>Hardware Models/CPU</i>	<i>5</i>
Install Procedure for the Disc Publishers.....	6
<i>Installation procedure for the Epson Disc Publishers</i>	<i>6</i>
Install and configure the Epson Software	6
Supported Epson Disc Publishers	6
Install the Epson Disc Publisher Software.....	6
Configure the Epson Total Disc	7
Configure the Epson TD Bridge	7
Start EPSON TD Bridge	7
<i>Installation procedure for the Primera Disc Publisher Software.....</i>	<i>8</i>
Install and configure the Primera Disc Publisher Software	8
Supported Primera Disc Publisher	8
Install the Primera Disc Publisher Software.....	8
Install and Configure SpeedJet Printer Driver	10
Install and configure the USB to Serial Converter	12
Configure the Alignment Utility and align printer (Align.exe or Putty)	12
Configure Windows Auto Play Settings	14
Install the Apollo Disc Publisher Software (PoINT Publisher NG).....	14
Configure PoINT Publisher NG Software (screenshots below).....	15
Install the “DCMburner Software”	19
<i>Install DCMburner</i>	<i>19</i>
<i>License.....</i>	<i>20</i>
How to activate the Rockey USB Software Protection Key	20
How to activate by a license file based on the computer hardware	21
User Guide	22
<i>Setup the DCMburner software</i>	<i>22</i>
Setup - Dicom Server	22
Setup – Publisher	23
Setup – Publisher - “Epson”	23
Setup – Publisher - “Primera”	24
Setup – Publisher – CD and DVD settings	25
Setup – Publisher - “Apollo 2HMD Disc Publisher”	26
Setup – Profiles	27
Setup – Profiles – Viewer.....	28
Setup – Profiles – Media Configuration	29
Setup – Profiles – Media Print Labels	30
Setup – Profiles – External Dicom Server	31
Setup – Profiles – Web module	32
Setup the Web module	32

Test the DCMburner Web module	33
Setup – General Settings - Language.....	34
Setup – General Settings – Date Format	34
Setup – General Settings - Swap Name	34
Setup – General Settings – Form Style Settings	34
Setup – Encryption AES 256	35
Setup – SOP Transfer	36
Setup – Advanced options	36
Setup – License	37
How to activate the Rockey USB Software Protection Key	37
How to activate by a license file based on the computer hardware	37
Getting Started	38
Explaining the DCMburner Software	38
Toolbar	39
Burn Disc.....	39
Auto Burn	40
Refresh.....	40
Q/R	41
Filter.....	42
Export.....	42
Keyboard	43
Jobs	43
Setup	43
About.....	43
Close.....	43
Patient/Study Screen	44
Patient List	44
Patient Info Screen	45
Study and Serie list	46
Image List.....	47
Image / Video / Report / Dicom Header Preview	48
Jobs / Publisher Info Screen.....	49
Vertical Job Toolbar	49
Ink Level Screen.....	49
The Disc Content	50
Dicom Viewer	51
The HTML Viewer	53
The DCMburner Web module	54
Editing the Epson Label file	56
Example of the merge.txt file	57
Editing the Primera Label file	58
Example of the merge.txt file for the Single Patient Label	59
Example of the merge.txt file for the Multi Patient Label	59
Editing the Apollo 2HMD Disc Publisher Label file	60

Example of the merge.dat file for the Single Patient Label 61
Example of the merge.dat file for the Multi Patient Label 61
***Edit the Free fields* 62**

Getting Started Guide

Welcome to the Getting Started Guide for the DCMburner software.

This guide is meant to provide you with general instructions on how to set up the DCMburner software with the simplest configuration in order to get you up and running as quickly as possible.

Please review the Software Prerequisites for an understanding of what requirements are necessary for the DCMburner software. Please refer to the DCMburner User's Guide for more in-depth instructions on configuring and using the software.

Software Prerequisites

Minimum System Requirements

OS (Operating System)

- Windows 8 (32 bit/64 bit) Home /Professional
- Windows 9 (32 bit/64 bit) Home/Professional
- Windows 11 (32 bit/64 bit) Home/Professional

Hardware Models/CPU

- Processor
 - Intel i5 (or compatible) or faster
- Memory
 - 8Gb or more
- Resolution
 - 1360x768 pixels or higher
- Display
 - 24 bit or more
- HDD/SSD
 - Available space: 100GB or more
- USB
 - 1 x USB 2.0 for the Epson or Primera Publishers
 - 1 x USB 2.0 for the Rockey4 USB Software Protection Key (depending the software license)
- Network
 - 100 Base-TX/1000 Base-T
- Supported CD/DVD Robot Models
 - All EPSON PP-x Publishers
 - All PRIMERA Disc Publisher Models
 - Apollo 2HMD Disc Publisher

Install Procedure for the Disc Publishers

Installation procedure for the Epson Disc Publishers

Install and configure the Epson Software

Supported Epson Disc Publishers

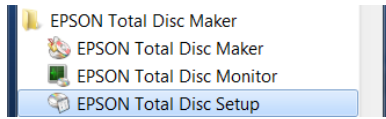
- EPSON PP-50 (I – II)
- EPSON PP-100 (I – II – III)
- EPSON PP-100N (I – II)
- EPSON PP-100AP
- EPSON PPBD

Install the Epson Disc Publisher Software

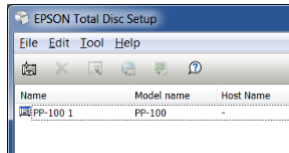
- Install the latest Epson Disc Publisher Software, at least version 8.0. You can find the latest setup files on <https://download.epson-biz.com/modules/dp/>
- Download "EPSON Total Disc Maker for Windows Ver. 9.00" or the newer version.
- Download "EPSON TD Bridge Ver. 9.01" or the newer version (Keep in mind that the TDBridge must have the same integer version number as the Total Disc Maker.
- Extract the downloaded files in a temporary folder.
- Run the Epson Total Disc Maker as a local administrator and follow the instructions.
- Run the Epson TD Bridge as a local administrator and follow the instructions.

Configure the Epson Total Disc

In order to configure - Windows button, All Programs, EPSON Total Disc Maker and run “EPSON Total Disc Setup”



To get the properties, double click the Disc Publisher. Normally it's the PP-100 1 line.

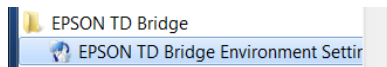


Configure as follow

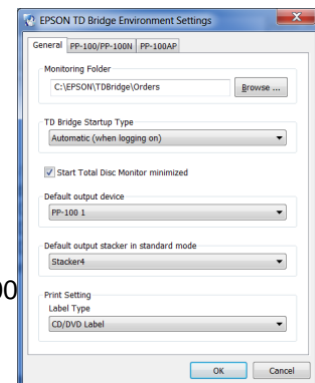
- Name : PP-100 1 or PP-50 1
- Publish Mode : External Output mode
- Stacker 1 : CD-R
- Stacker 2 : DVD(+R/-R)
- Stacker 3 : Do not use
- The Drive and Printer Settings as preferred.
- Press ok

Configure the Epson TD Bridge

- In order to configure - Windows button, All Programs, EPSON TD Bridge and run “EPSON TD Bridge Environment Settings”

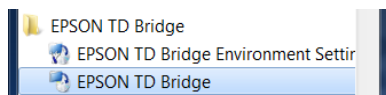


- Configure as follow
 - Monitoring Folder : C:\EPSON\TDBridge\Orders
 - TD Bridge Startup Type : Automatic (when logging on)
 - Start Total Disc Monitor minimized : Check
 - Default output device : PP-100 1 or PP-50 1
 - Default output stacker in standard mode : Stacker4 (PP-100)
 - Label Type : CD/DVD Label
 - Press OK



Start EPSON TD Bridge

- In order to start the “EPSON TD Bridge” - Windows button, All Programs, EPSON TD Bridge and run “EPSON TD Bridge”.



Installation procedure for the Primera Disc Publisher Software

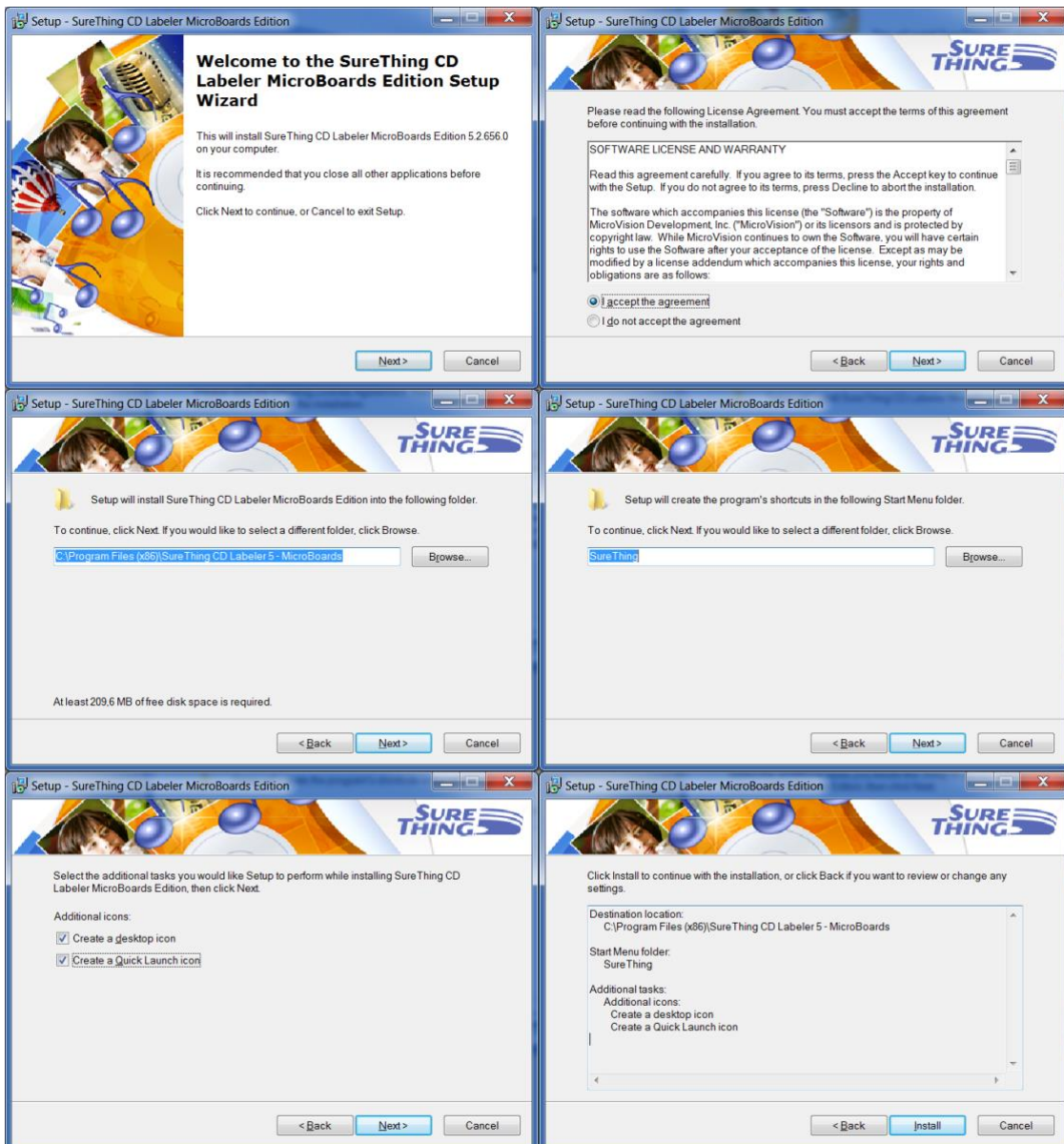
Install and configure the Primera Disc Publisher Software

Supported Primera Disc Publisher

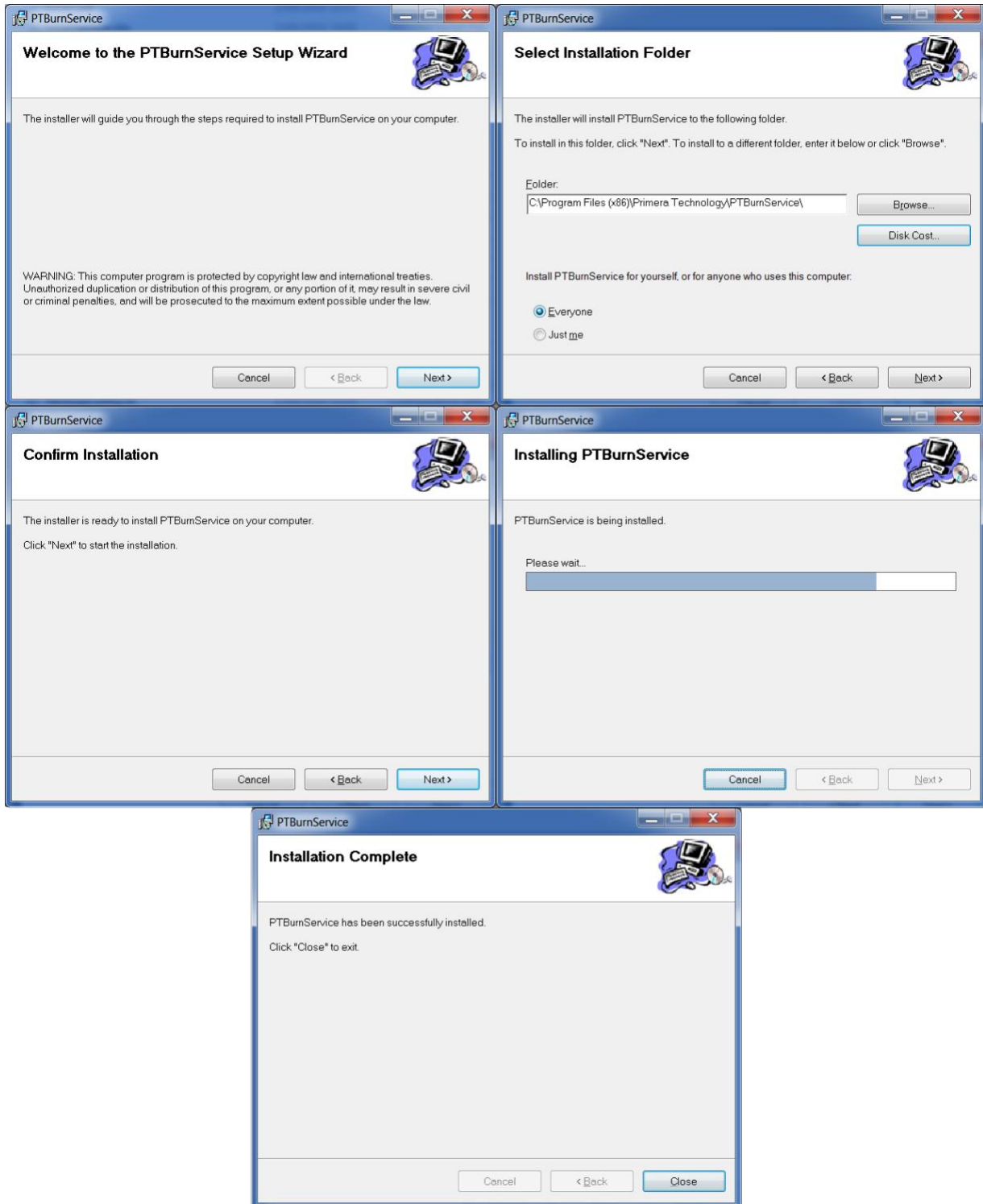
- Disc Publisher SE
- Disc Publisher II
- Disc Publisher PRO
- Disc Publisher XR
- Disc Publisher XRP
- Disc Publisher Pro Xi-Series
- Disc Publisher 4100 Series (including XRP)
- Disc Publisher SE-3
- Disc Publisher 4200 Series (including XRP)

Install the Primera Disc Publisher Software

- If you have a previous version of PTBurn SDK installed, uninstall that version through Window's "Add or Remove Programs".
- Follow the directions to install the printer driver and SureThing software from the installation disc that came with the Disc Publisher. (This should be done on the server computer that will have the Disc Publisher attached).



- Download at least version 3.4.3 <http://www.primera.com/>
- Connect the Disc Publisher to the server computer.
- Run \Server\Setup.exe to install the PTBurn Service. -- For special install instructions, see the SDK documentation (Appendix B). PTSETUP.INI can be modified prior to installation to customize the service's behavior.

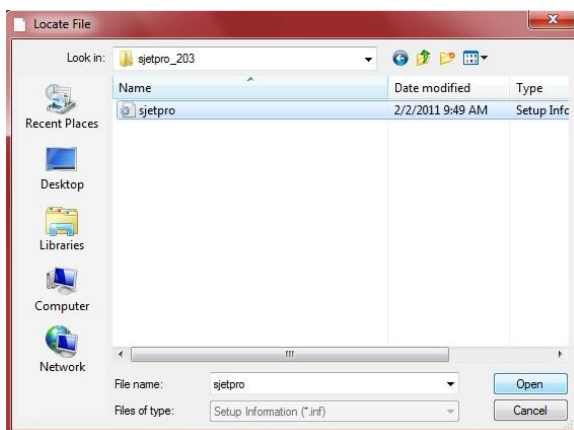
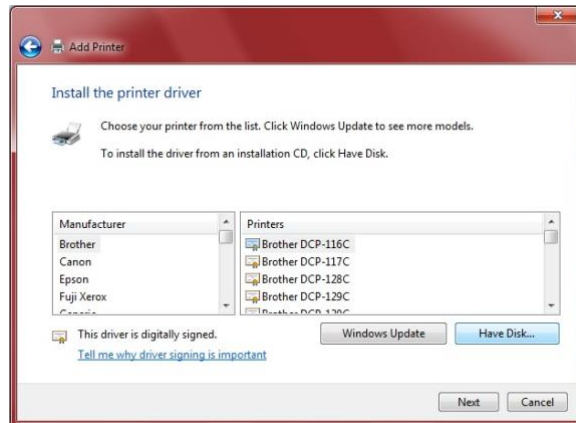
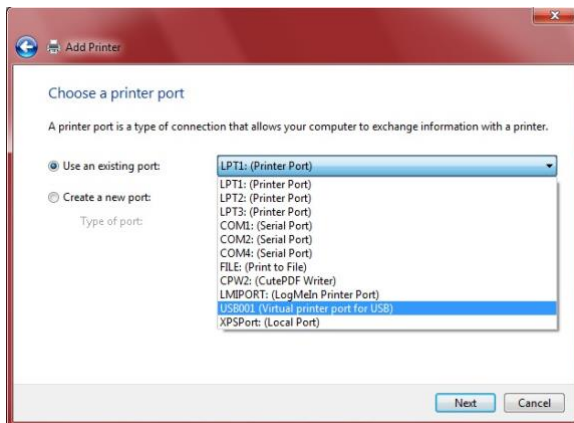


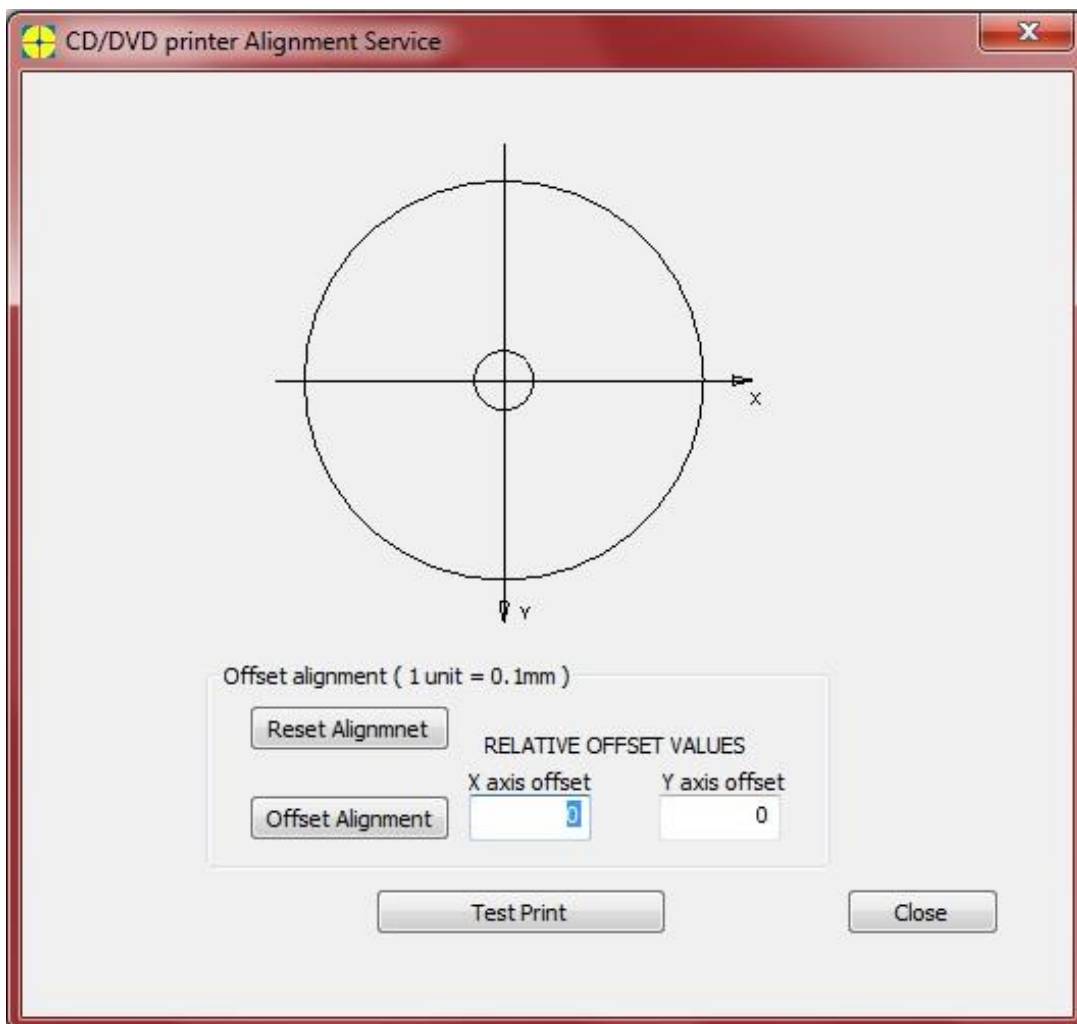
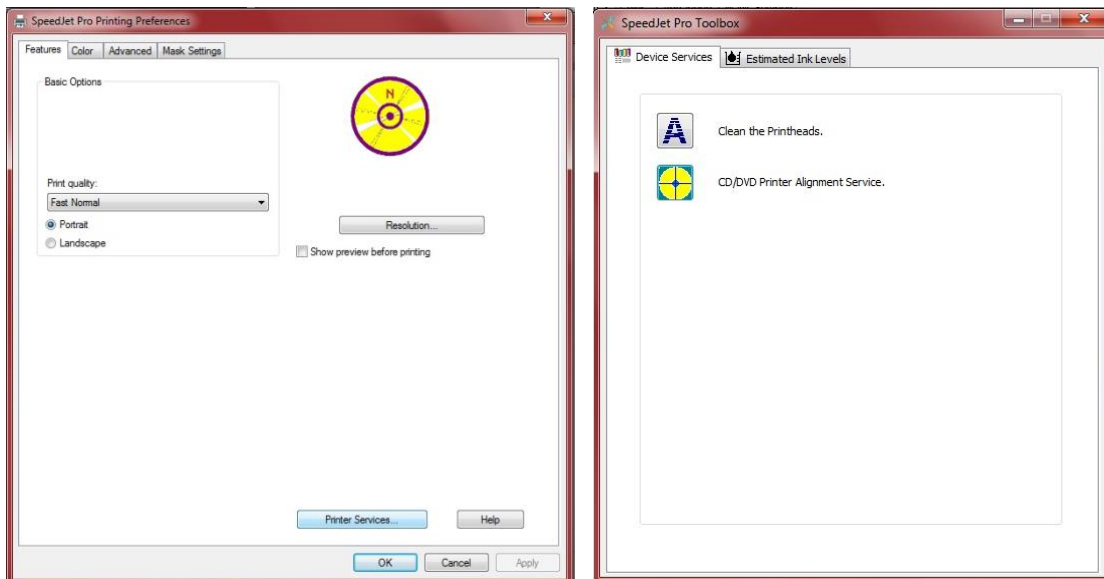
- Reboot your computer system.

Installation Procedure for Apollo 2HMD Disc Publisher

Install and Configure SpeedJet Printer Driver

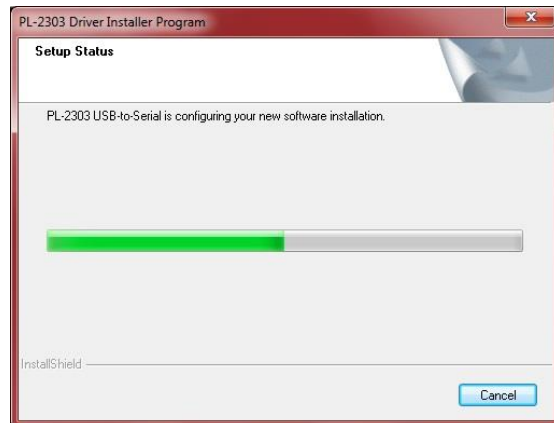
- Connect your SpeedJet Printer to your PC via the USB cable provided and power on the printer.
- Insert the CD with the SpeedJet printer driver into your PC's drive.
- On your PC, go to START > DEVICES & PRINTERS
- Under "Printers and Faxes" – Right Click and select "Add Printer"
- Select "Add Local Printer" and select "Use existing port" and choose the USB virtual printing port that was just installed.
- Select "Have Disk" and browse to the location of the driver on the CD, usually it will be "E:\sjetpro_203\"
- Follow the on-screen instructions. When the Windows Security message pops up, click "Install this driver software anyway" to proceed.
- Select "Do not share printer" and "Set Printer as Default"
- In Devices and Printers, right click on the SpeedJet Pro then click the following: Printing Preferences > Printer Services > CD/DVD Alignment Service and press Test Print to ensure your label is aligned. If it is not, adjust the offset accordingly as indicated on the screen and "test print" until satisfied.





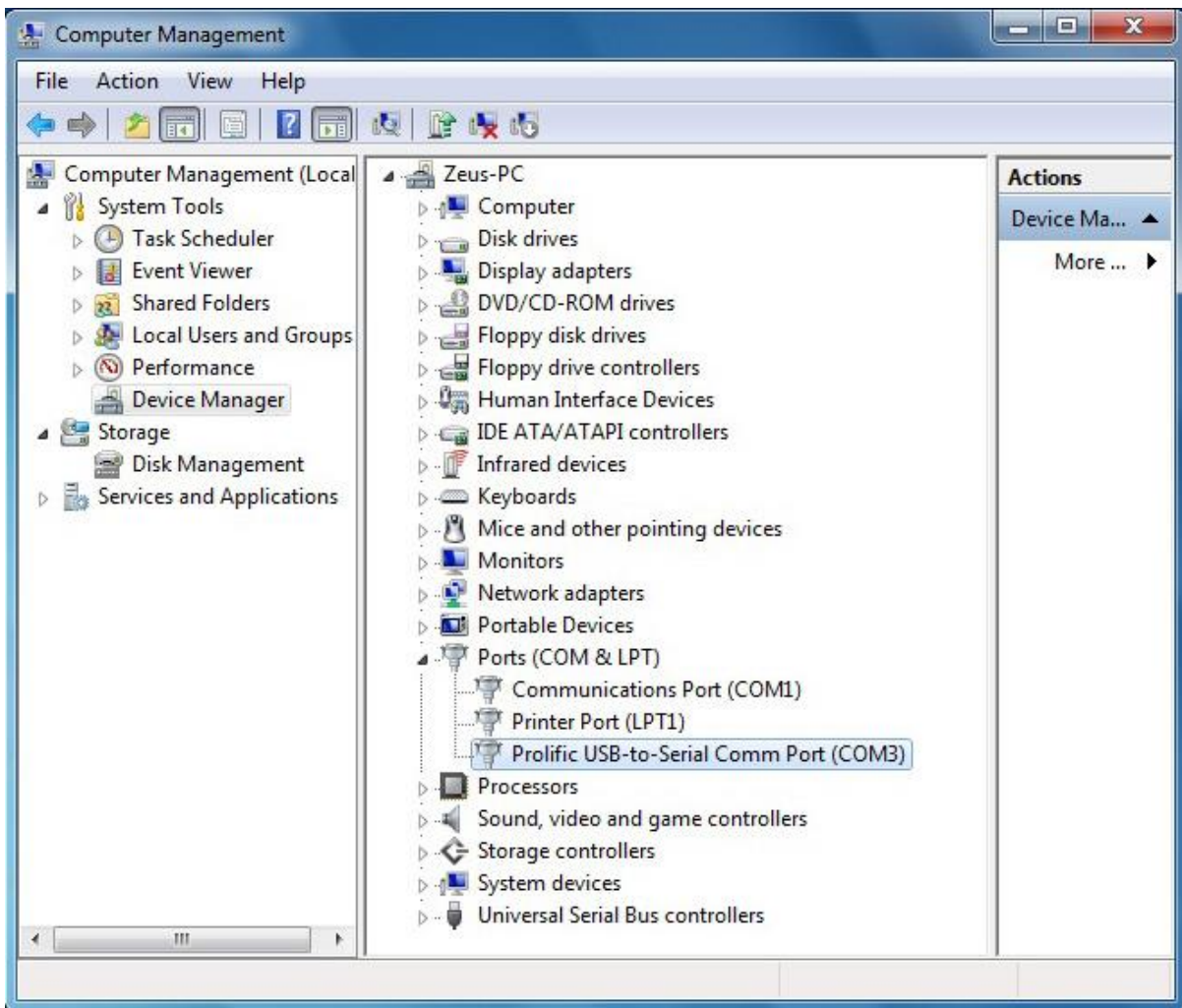
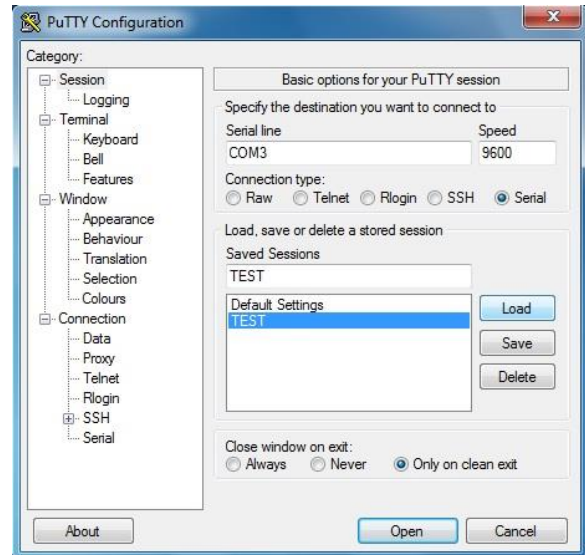
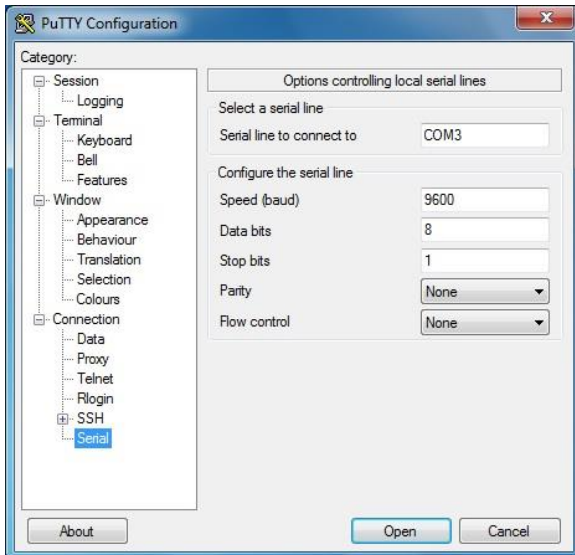
Install and configure the USB to Serial Converter

- Insert the mini blue CD into your PC's drive.
- Open the CD and select "Autorun.exe" and follow the on-screen instructions to install the USB to Serial converter correctly.
- Once finished, reboot your PC and connect the blue USB to Serial cable from your autoloader. It will automatically install the device.
- To check that it installed correctly, right click on My Computer on your desktop and select "Manage" then click on "Device Manager" and expand the "Ports" category. It should show up under COM3 as indicated in the screenshot below. If that is not the case, then double click the device and change the Port Setting to be on COM3.
- Once it's on COM3, proceed to the next step.



Configure the Alignment Utility and align printer (Align.exe or Putty)

- Locate the Align.exe utility on the Apollo Series CD and drag it to your desktop. This is not an application and will not require any installation.
- Open the utility, and in the left hand menu select "Serial" at the very bottom.
- Change serial line to connect to COM3 and Flow Control to None.
- Click back on Session at the very top left, select the "Serial" radio button, save the session as "TEST" or something similar. Select Load, then Open and a black screen will pop up.
- Make sure you have CAPS LOCK on and press the letter C. This is for the robot to Calibrate to the Home position.
- Make sure everything from your printer is connected, i.e. printer command cable, and press the number 2 to open the printer tray. Then press the letter I for insert to grab a disc from the input bin and place it on the printer tray. Press the letter A to grab the disc off the tray and unload it onto the output spindle.
- Continue this process until you are satisfied with the disc placement and unloading. You will need to physically move the printer left, right, back, or forward accordingly. Once satisfied, tighten the thumbscrews to secure the printer in that position.

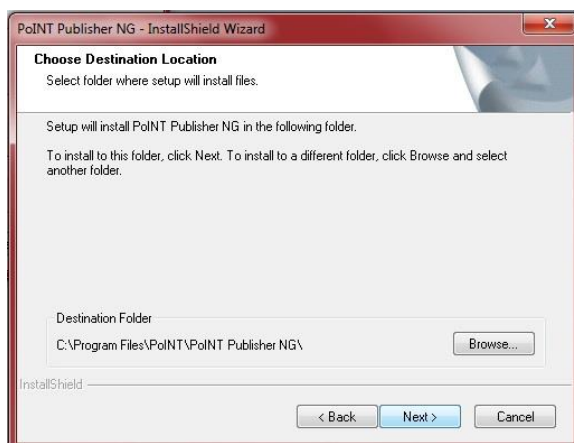
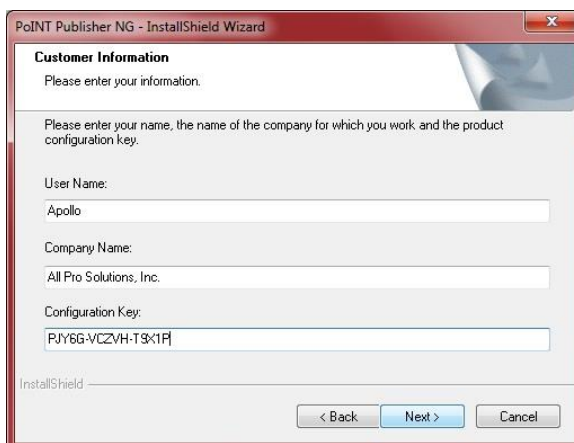
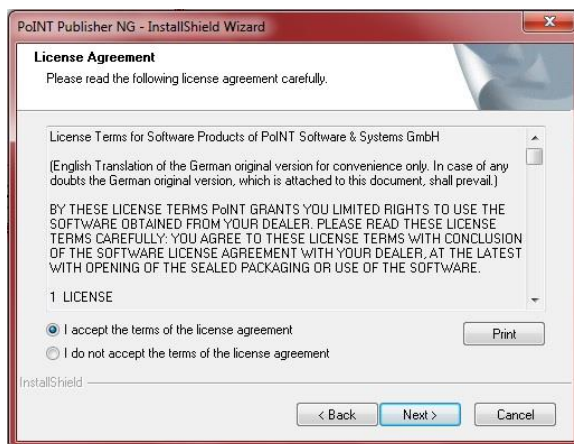
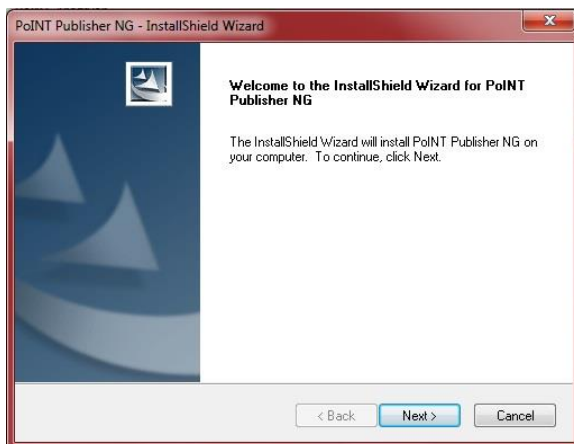


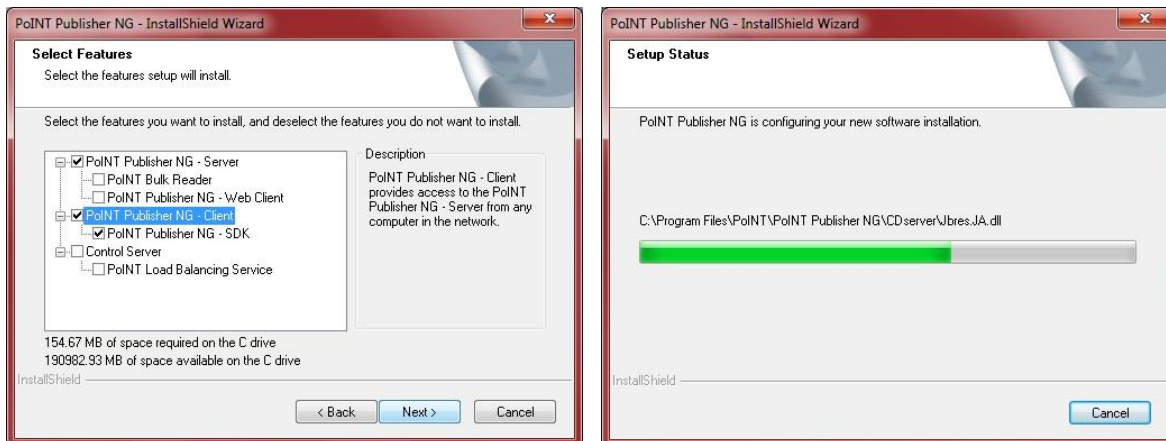
Configure Windows Auto Play Settings

- In order to have optimum performance, Autoplay will need to be turned off. If it is not currently off, there are two settings within Windows that will need to be changed.
- Click on START > type in “regedit” and hit enter. This opens your registry editor.
- Navigate to “HKEY_LOCAL_MACHINE > SYSTEM > CurrentControlSet > Services > cdrom > and open the “AutoRun” file. Change the value data to “0” and press OK.
- Next click on START > type in “gpedit.msc” and hit enter. This opens your group policy editor.
- Navigate to “Computer Configuration > Administrative Templates > Windows Components > AutoPlay Policies > click on “Turn Off Autoplay”. Select “Enabled” and “All Drives” and press OK.
- Reboot your PC to ensure the settings save.

Install the Apollo Disc Publisher Software (PoINT Publisher NG)

- Insert the Apollo MD Series CD into your PC's drive, open the “PPNG Software” folder and run the “ppng_xxxx” application.
- Follow the on-screen instructions, and when prompted, insert the “Configuration Key” found in “License.txt” file in the “PPNG Software” folder.
- When prompted to select features to install, deselect Bulk Reader and Web client as these are not licensed features for your Apollo MD Series machine. Continue installation by following the on-screen instructions until it is finished.





Configure PoINT Publisher NG Software (screenshots below)

- Open PoINT Publisher NG Server by going to “START > All Programs > PoINT Publisher NG > PoINT Publisher NG – Server” (You may want to create desktop shortcuts for both the PPNG Server and PPNG Client)
- You will have the full version available for 7 days. You will be prompted to setup the software.
- Go to Configuration > License Key > and copy the Serial Number and Product key into the file “License.txt” and email the file over to sales@allprosolutions.com to have your software activated. (fig.1)
- Select Configuration > Settings > Device Configuration > to setup all devices correctly. (fig.2).
- You will have a screen showing “Autoloaders Found” and will list “Drives Towers” and “Olympus (COM3)”. Make sure to select the “Olympus” option.(fig.2)
- Once that activates, on the same “Device Cnfiguration” tab, select “Setup”(fig.3)
- Under Printer, select the “SpeedJet Pro” printer you just installed. (fig.4)
- Under “Recorder Assignment”, you can add or remove the number of active drives depending on your configuration. Select “Add” on the right to choose from the list of drives connected to your PC. Be sure to only select the drives that are part of the Apollo and not your PC’s drive as well. (fig4)
- By pressing “Identify Device” the selected drive will open and close. Press Apply to save.(fig.4)
- Select the “Bins” tab to the far right and choose the media you wish to use. (fig.10)
 - **NOTE: Media Type must match the media that is in the input bins. If you try to burn a CD image and you have DVD selected as your media type, and there are DVDs in the input bin, the job will automatically fail. The same applies vice versa.**
- First go to your C: or D: drive (if you have more than one hard drive) and create a folder called “Temp”. Then select the “Defaults” tab and select this folder as the “Temporary Working Directory”. Make sure this folder remains empty as the software will add and remove temporary files during job processing. (fig.6)
- You can choose to uncheck the “Compare” option or leave it as is.
- Click on the other tabs and set them up to your liking.
- The PPNG Server is now ready to accept jobs.

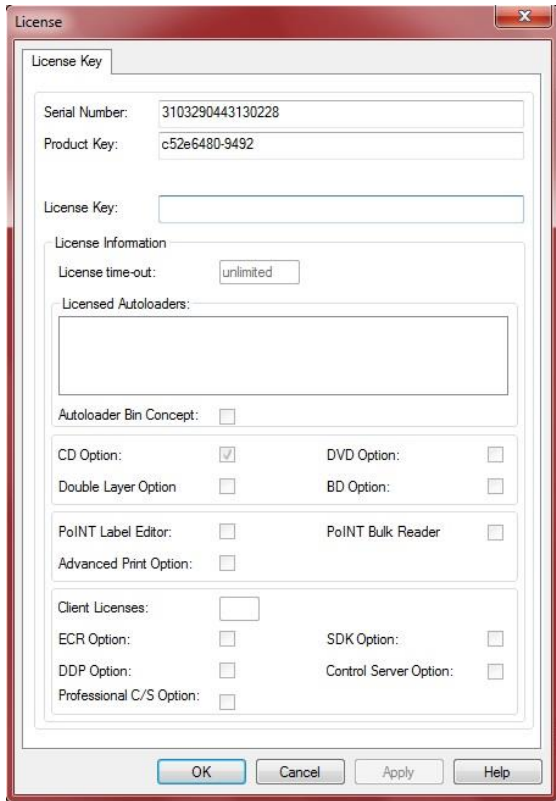


fig.1

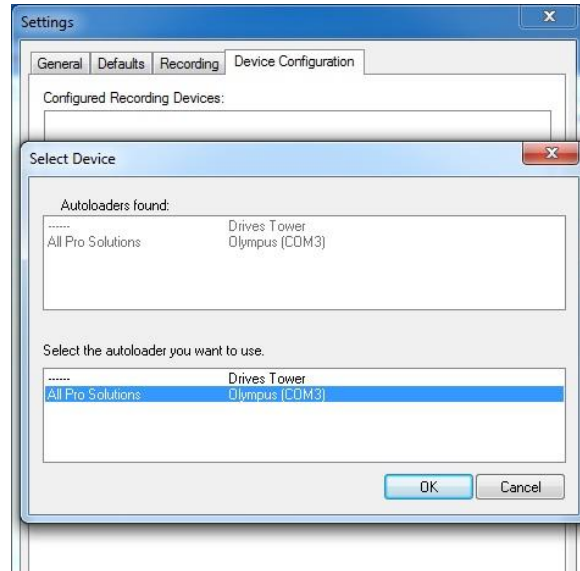


fig.2

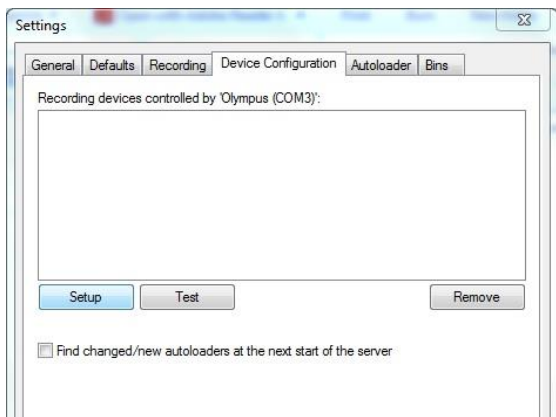


fig.3

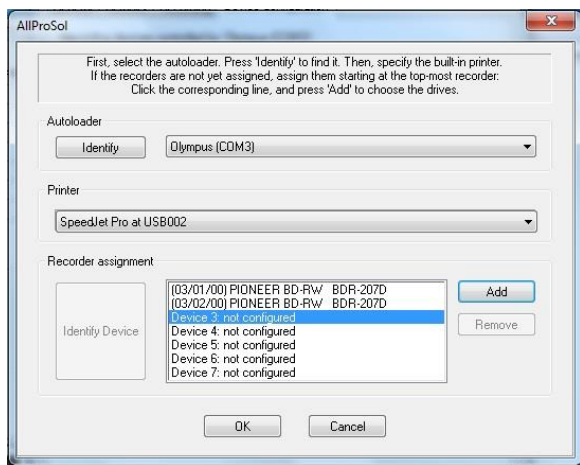


fig.4

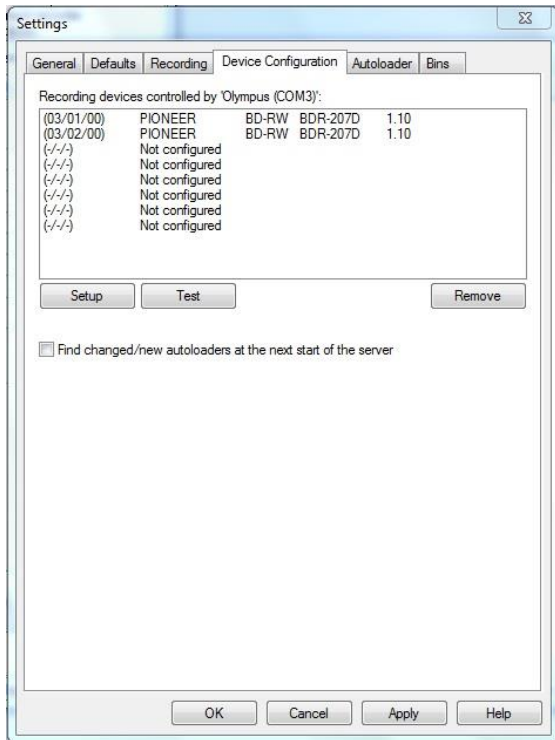


fig.5

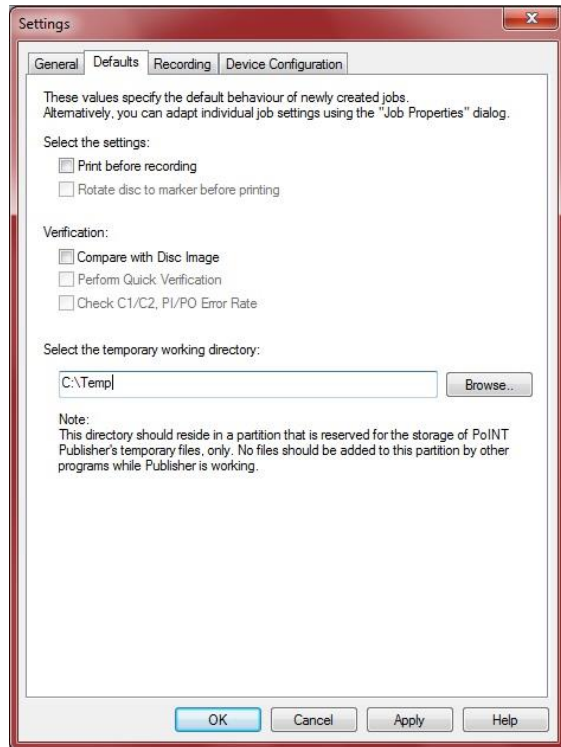


fig.6

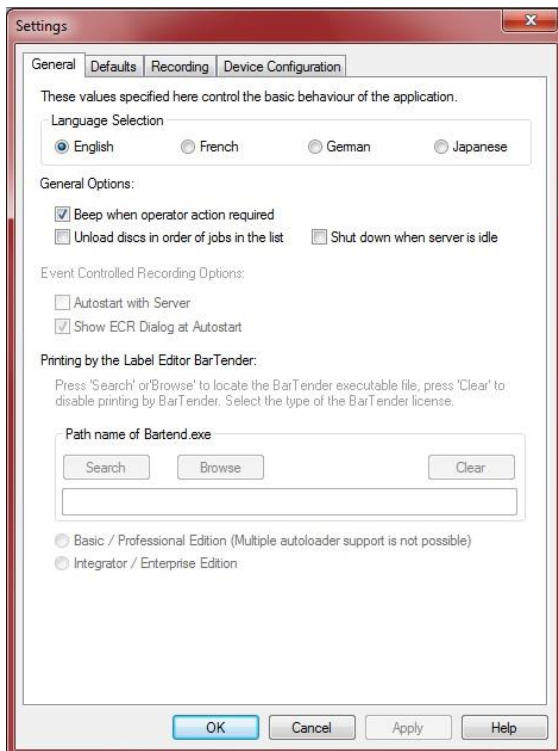


fig.7

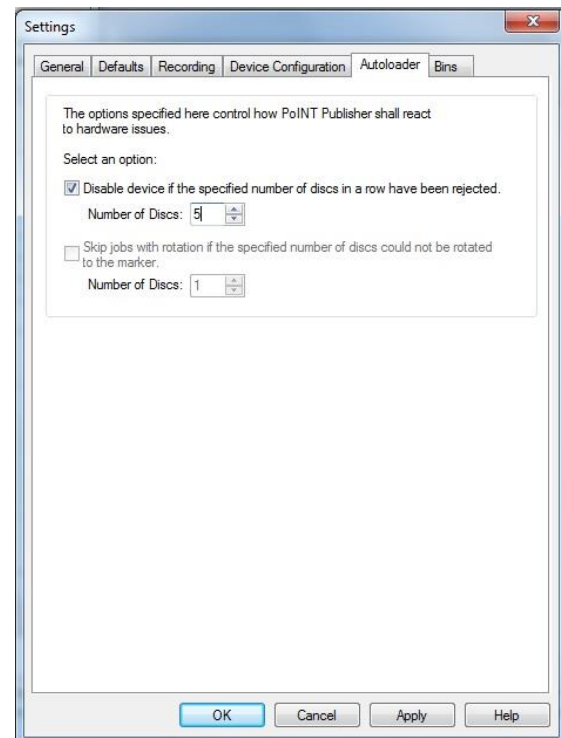


fig.8

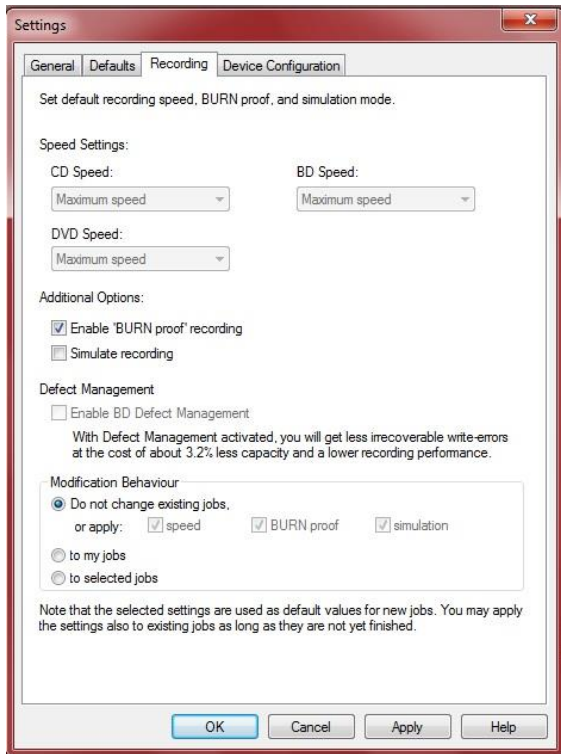


fig.9

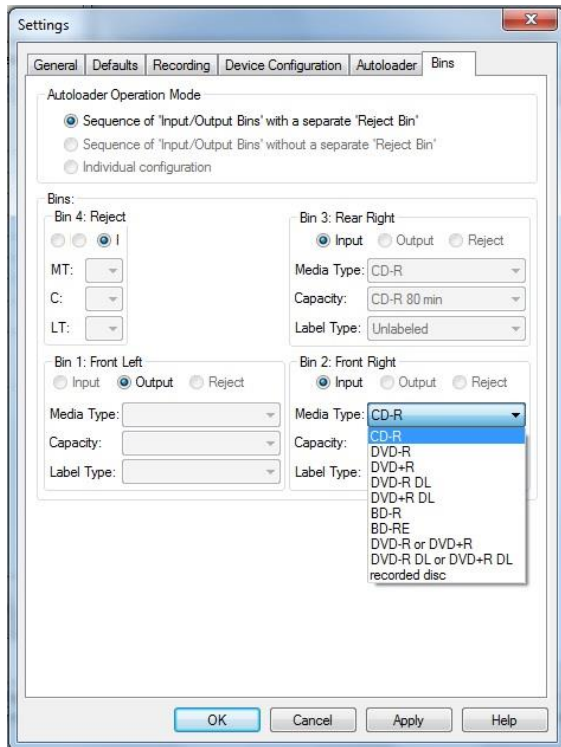
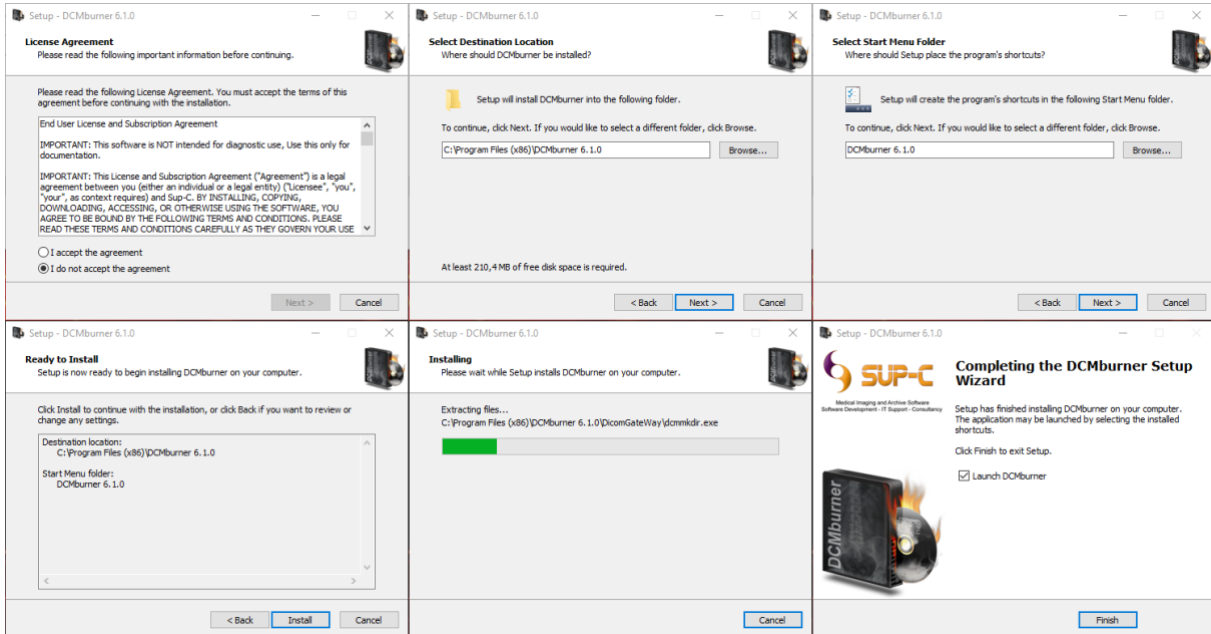


fig.10

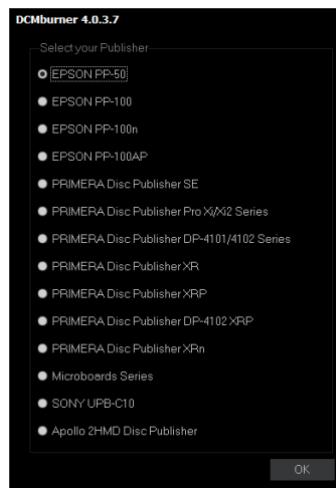
Install the “DCMburner Software”

Install DCMburner

- Download latest DCMburner version at . https://sup-c.com/download/dcmburner_6.zip
- Extract the “Setup DCMburner_6.zip”
- Run the “Setup_DCMburner_6.x.x_32bit.exe”



- On completing the DCMburner Setup, select “Launch DCMBURNER” and Finish.
- If you run DCMburner for the first time select the preferred Disc Publisher and press ok.

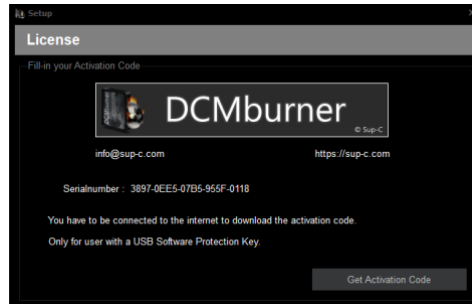


- DCMburner is now installed and ready for burning.

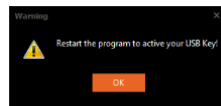
License

How to activate the Rockey USB Software Protection Key

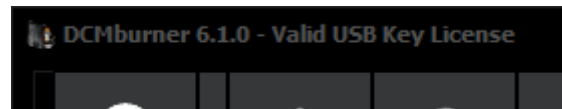
- Insert the Rockey USB Software Protection key. No installation is needed, the driver will be installed automatically by Windows.
- Connect to the internet.
- Start DCMburner.
- The serial number is shown in the Setup/License form.



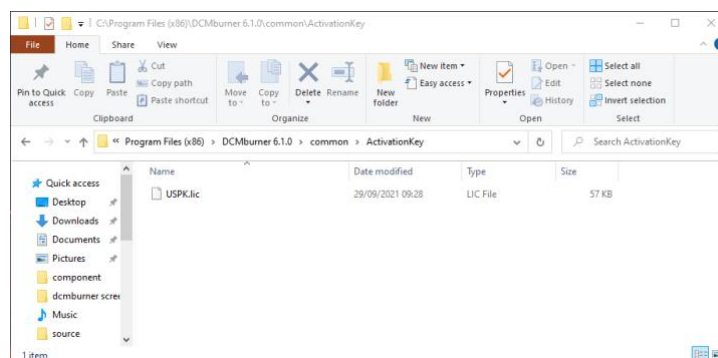
- To activate press the “Get Activation Code” to retrieve the encrypted activation code.
- Press the OK button to activate the USB Key.



- When starting DCMburner the form caption will display “Valid USB Key License”.

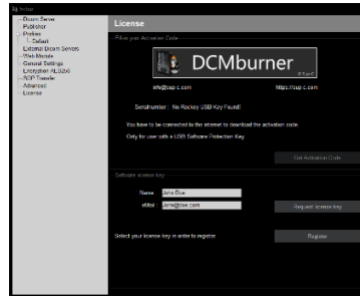


- In case you can't connect to the internet you need to request the encrypted activation USPK.lic file. After you've receive this file you need to copy to the “C:\Program Files (x86)\DCMburner 6.x.x\common\ActivationKey\” folder and start DCMburner to activate.

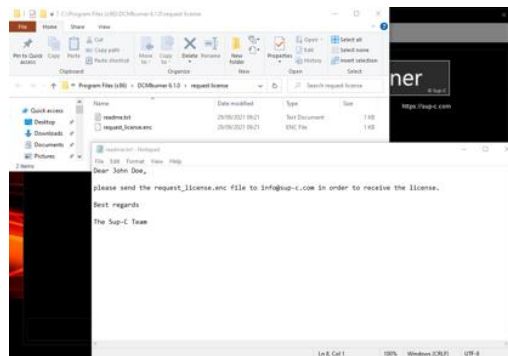


How to activate by a license file based on the computer hardware

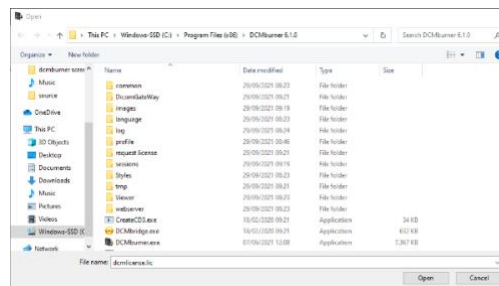
- Start DCMburner.
- Go to Setup/License.
- In the “Software license key” section you need to fill-in your Name and eMail.



- Press the “Request license key” button.
- The explorer will open the folder which contains the readme.txt and request_license.enc files.



- Send the request_license.enc file to Sup-C.
- After Sup-C created the license file based on the computer’s hardware, they will send you dcmlicense.lic file.
- You need to copy the dcmlicense.lic file to the DCMburner root folder.

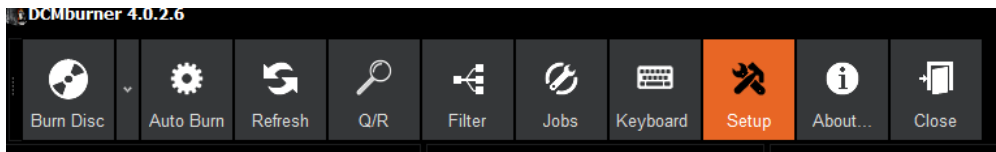


- Start DCMburner to activate the license.

User Guide

Setup the DCMburner software

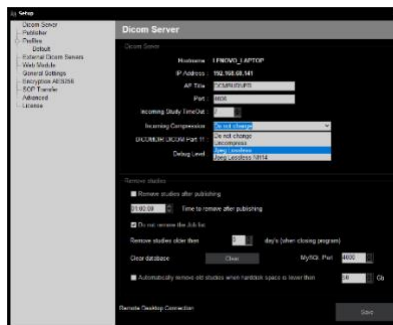
Start DCMburner and press the “Setup” button.



Setup - Dicom Server

In this section you can configure the Dicom Gateway and the database.

- The Hostname is automatically filled in, even as the IP Address. They cannot be editing in the DCMburner software. If wanted, change this in the Windows environment.
- The standard AE-Title is DCMBURNER, but you can change this as you like. You can use up to 16 uppercase characters.
- The Dicom Gateway Port is standard 4006, but you can also use different port numbers like 104 for example.
- The incoming Study Time-Out is set to 7 seconds. If your network is slow then increase this value.
- Incoming Compression: the standard is “Do Not Change”, this means that all images are stored as they are send by the Dicom Client. If needed you can change this in uncompress, in case the images are send as Lossless the converted to an uncompressed Dicom file. If you choose the Jpeg Lossless option, all the images are compressed to Jpeg Lossless. Be careful, not all Dicom viewers support this.



- Dicom Dir Part 11, normally the standard General Purpose CD-R/DVD Interchange is activated. With this option it's possible to choose other Dicom Dir formats like CD-R_DVD-RAM, STD-GEN-DVD-JPEG, STD-GEN-DVD-J2K, STD-GEN-BD-JPEG, STD-GEN-BD-J2K etc. More info regarding the Dicom Part 11: Media Storage Application Profiles you find at http://medical.nema.org/dicom/2004/04_11PU.PDF
- Debug Level, level 0 is the standard log and level 4 gives you the highest possible log level. If you want to view the live log press first the Debug Screen.
- If you enable “Remove studies after publishing” the burn studies will be automatically removed after x time.
- Standard the removal time is set to 1 hour.
- If you want to remove the job in the Job List you can disable this option. Not recommended.
- Removing studies, you can change this value from 0 to 7 days. When the program closes it will remove all studies older than n days.
- Clear database, if needed you can wipe all data from the database and Image folder.
- Standard port 4000 is used for the MySQL Database, if needed you can change it.
- Automatically remove old studies when the hard disc space is lower than x, if selected than the DCMburner will erase all the oldest studies in order free your hard disc to the given level.
- Remote Desktop, in case you need help we can always connect to your system. You need an internet connection for this.

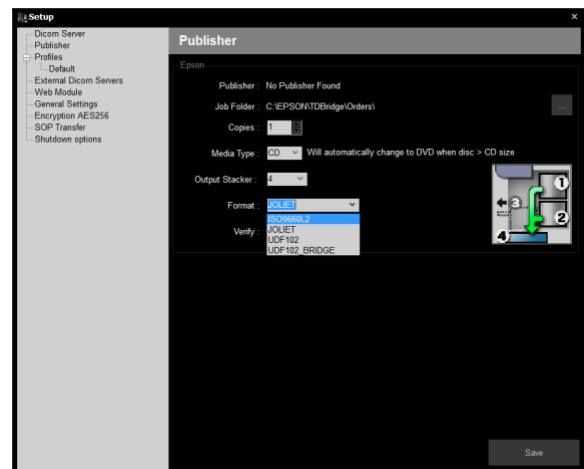
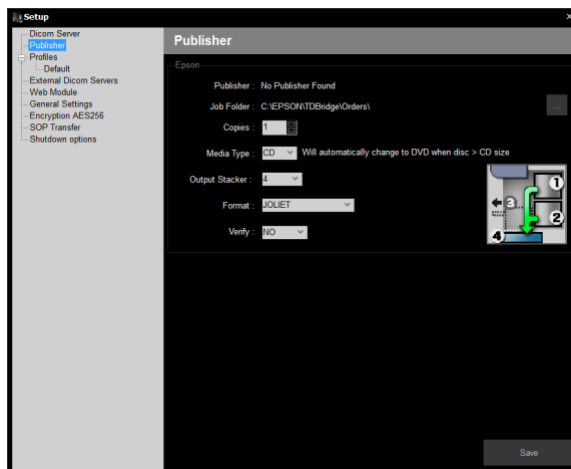
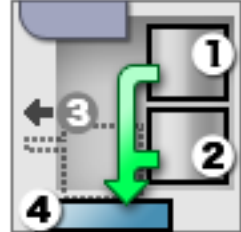
Setup – Publisher

- This section describes the Publisher setting, depending on which Publisher you use.

Setup – Publisher - “Epson”

This section describes the settings for the Epson Publishers.

- Publisher is already filled in. Otherwise the Job Folder is not correct.
- Job Folder, standard the location is “C:\EPSON\TDBridge\Orders\”. If this is not the case, then change this location by pressing the right button and choose the write folder.
- If you are planning to write standard more than one copy then select how many copies you prefer.
- The Disc type can be set to CD, DVD or DVD-DL (Double Layer).
- The output Stacker is normally Stacker 4 for the Epson PP-100 or Stacker 3 for the Epson PP-50.
- The standard format how a disc is written on the media is ISO9660L2. This is the best setting, other Operating Systems like Linux or OSX can read this disc format. Only if certain hardware has some problem reading the ISO format you can change this in JOLIET, UDF102 or UDF102_BRIDGE.
 - Specify "ISO9660L2" when creating the CD in ISO9660 Level 2 format.
 - Specify "JOLIET" when creating the CD in Joliet format.
 - Specify "UDF102" when creating the CD in UDF1.0.2 format.
 - When not specified, the CD is burnt in ISO9660 Level 2 format.
 - [When the disc type is DVD]
 - Specify "UDF102" when creating the DVD in UDF1.0.2 format.
 - Specify "UDF102_BRIDGE" when creating the DVD in UDF1.0.2 + UDF Bridge format.
 - When not specified, the DVD is burnt in UDF1.0.2 + UDF Bridge format.
- To verify the Disc content select “YES” otherwise leave it.



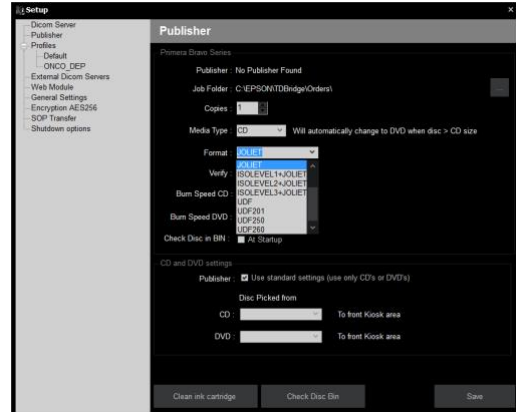
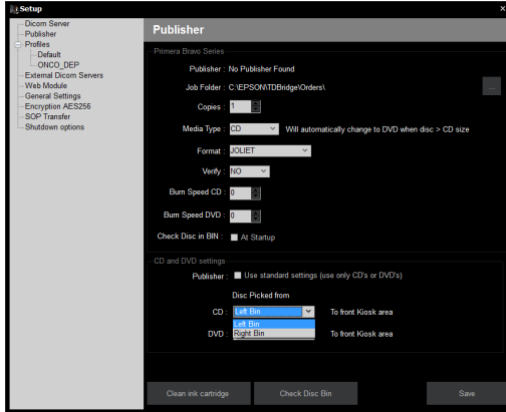
Setup – Publisher - “Primera”

This section describes the settings for the Primera Publishers.

- Publisher is already filled in. Otherwise the Job Folder is not correct.
- Job Folder, standard the location is “c:\PTBurnJobs\”. If this is not the case then change this location by pressing the right button and choose the write folder.
- If you are planning to write standard more than one copy then select how many copies you prefer.
- Media Type can be set to CD or DVDR
- The standard format how a disc is written on the media is JOLIET. This is the most common to use. Use the ISOLEVEL1 if the STD-GEN CD/DVD RAM is selected in the DICOM Server part. Only if certain hardware has problems reading the ISO format you can change this.
- Possible FileSystem:
 - ISOLEVEL1 – for an ISO 9660 Level 1 compliant CD with folder and file names in the 8+3 format using only the A-:Z, 0-:9 and “_” character set.
 - ISOLEVEL2 – for and ISO 9660 Level 2 compliant CD (DOS OEM characters). Filenames are 8+3 format (use ISOLEVEL3 for long filename support).
 - ISOLEVEL3 – for an ISO 9660 Level 3 compliant CD (DOS OEM characters, long file names)
 - JOLIET – for a Microsoft Joliet compliant CD with filenames up to 106 characters.
 - ISOLEVEL1+JOLIET – for an ISO 9660 Level 1 with Joliet CD.
 - ISOLEVEL2+JOLIET – for an ISO 9660 Level 2 with Joliet CD.
 - ISOLEVEL3+JOLIET – for an ISO 9660 Level 3 with Joliet CD.
 - UDF – for a UDF 1.02 bridge file system
 - UDF201 – for a UDF 2.01 bridge file system
 - UDF250 – for a UDF 2.50 bridge file system
 - UDF260 – for a UDF 2.60 bridge file system
- To verify the Disc content, select “YES” otherwise leave it.
- Burn Speed CD, if 0 is selected the standard burn speed is used. Select only if the CD writer gives some errors when burning the CD.
- Burn Speed DVD, if 0 is selected the standard burn speed is used. Select only if the DVD writer gives some errors when burning the DVD.
- Check Disc in BIN, if selected then DCMburner will give the Primera Publisher the command to check the Disc’s that are available in the BIN’s. This is done every time DCMburner starts.

Setup – Publisher – CD and DVD settings

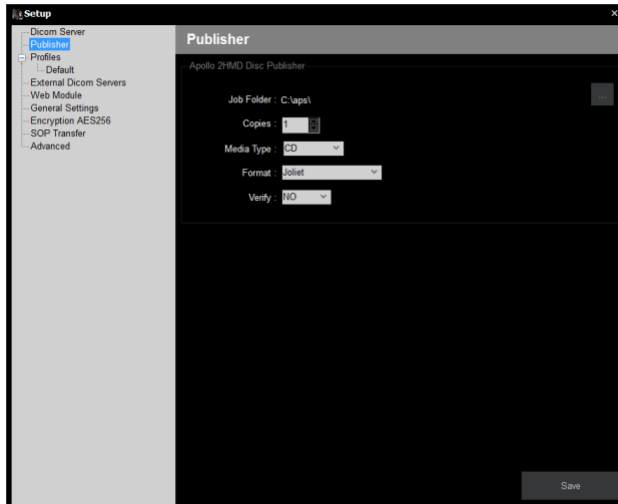
- Publisher, if checked then the standard settings of the Primera will be used to pick the CD's or DVD's. If the Publisher is not select, you can choose in which BIN the CD's or DVD's are placed. The output is always the front Kiosk.



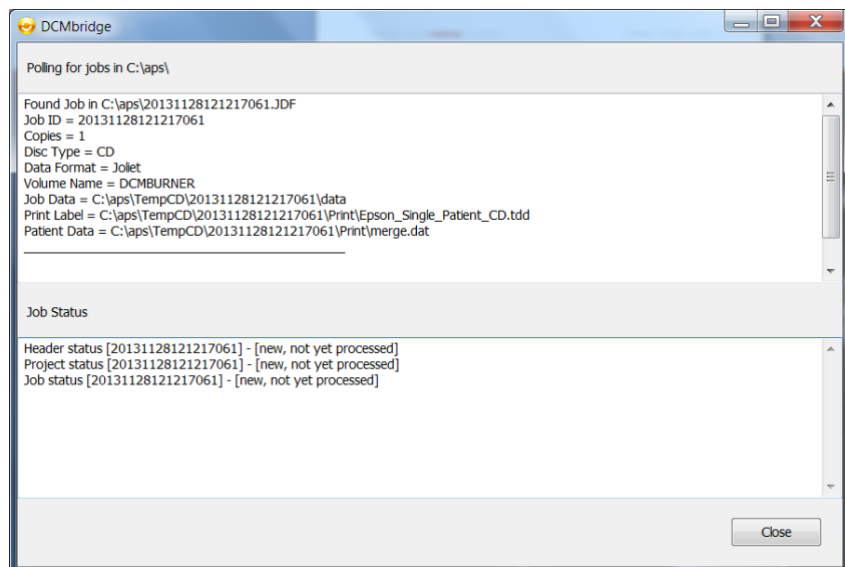
Setup – Publisher - “Apollo 2HMD Disc Publisher”

This section describes the settings for the Apollo 2HMD Disc Publisher.

- Job Folder, standard the location is “c:\aps”. If this is not the case, then change this location by pressing the right button and choose the write folder\
- If you are planning to write standard more than one copy, then select how many copies you prefer.
- The Disc type can be set to CD or DVDR.
- Format, the standard is Joliet.
- To verify the Disc content, select “YES” otherwise leave it.



In the Systray you find the DCMbridge. When click on the DCMbridge icon the DCMbridge screen appears. Here you can find more information of the running jobs.

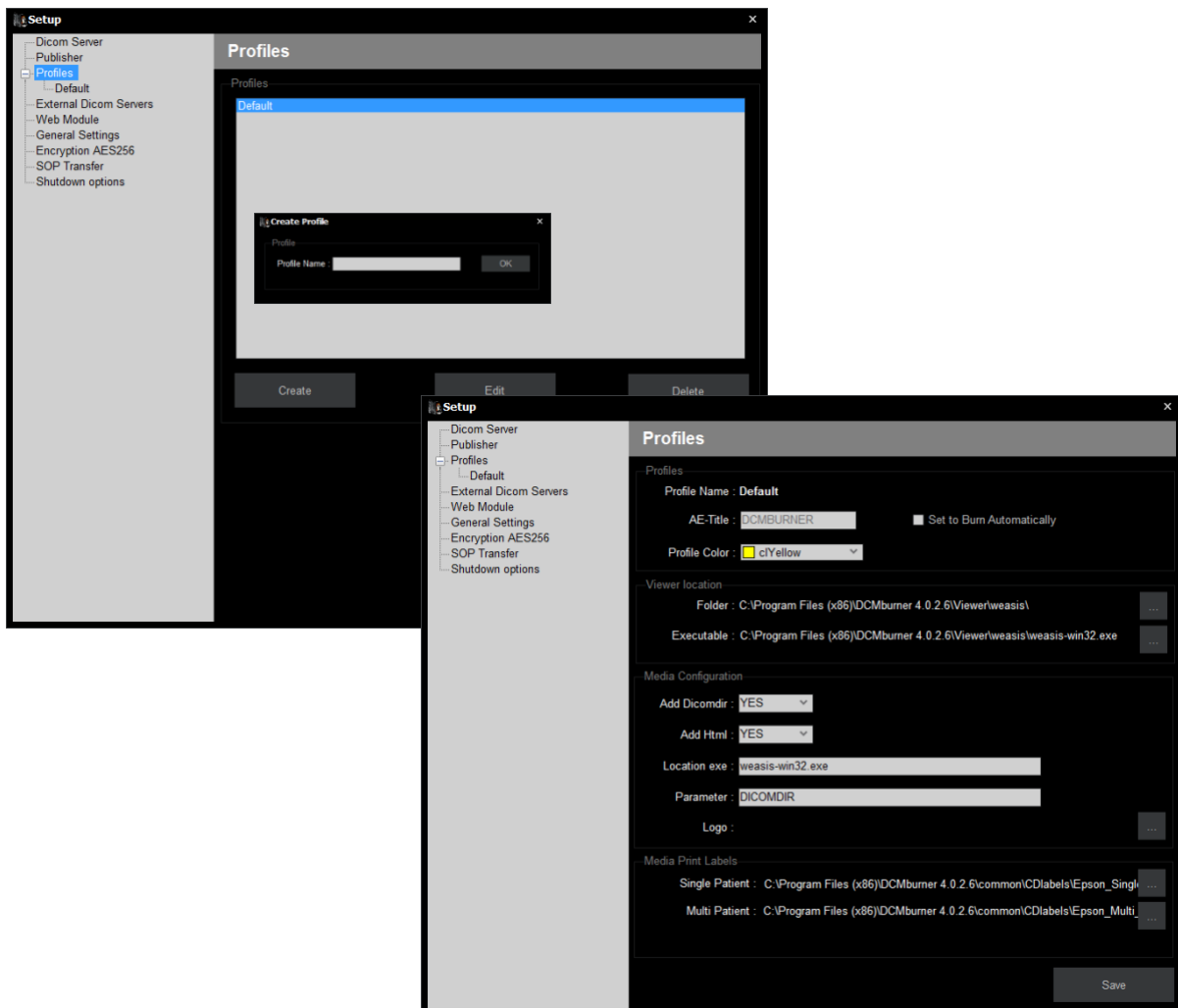
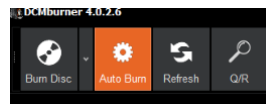


Setup – Profiles

With the profiles you can customize the viewer, print label and media settings. The default profile has been already filled-in with default values. You can add, edit or delete profiles except for the default. This profile can never be removed. Depending on which AE-Title the Medical Modality the studies are send to DCMburner select the appropriate profile. This way, it is possible to create a customized CD-layout for different departments in your hospital.

This section describes how to configure and setup one or more profiles.

- To create a new profile, press the Create button and fill-in the unique Profile name and confirm.
- The AE-Title must be unique for every profile. The Default profile always uses the Standard AE-Title that was given in the Setup – Dicom Server part. This field cannot be edit in the Default profile.
- For each profile you can choose a color that indicates the profile in the patient list.
- Set to burn automatically, you can set this profile to uses this for auto burn CD/DVD's. If the Auto burn is selected in the main toolbar, all studies with the according AE-Title will be automatically burned.



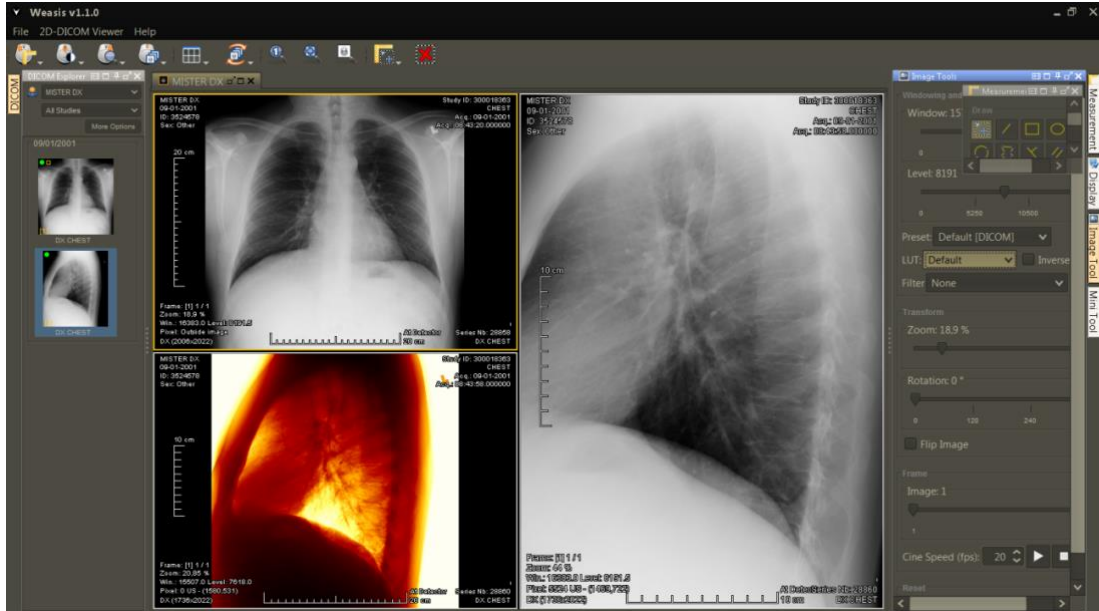
Setup – Profiles – Viewer

This section describes the settings for the Dicom viewer that's burned on the Media. The viewer location can be different for each profile, standard the settings of the default are set.

The DCMburner supports multiple viewers like, Weasis, RadiAnt, eFilm, Syngo Fastview, Onis, etc.

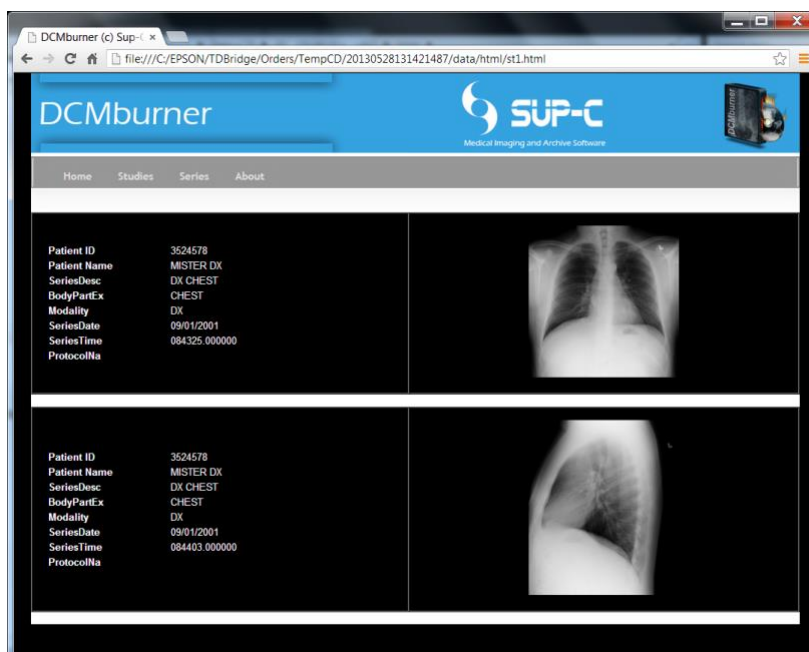
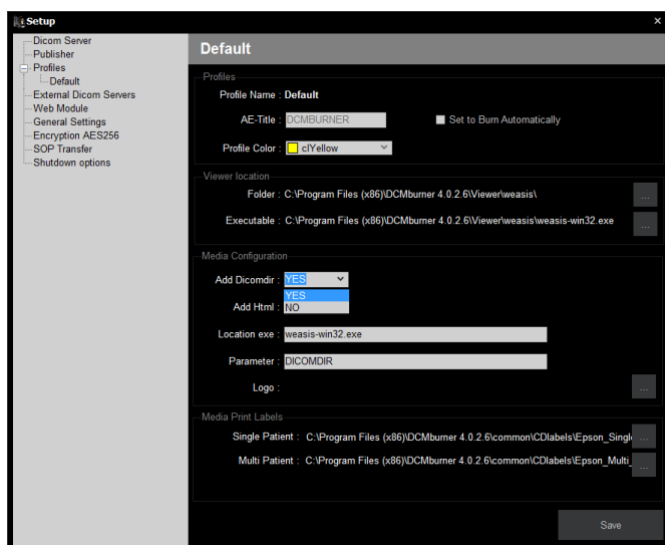
Note: The Weasis viewer is not a part of the DCMburner. It's a freeware Dicom Viewer.

- Viewer Location - Folder, here you can select the folder where the viewer is located. All the files of this folder are copied to the Media.
- Viewer Location - Executable, Select the program that's needed to start the viewer.



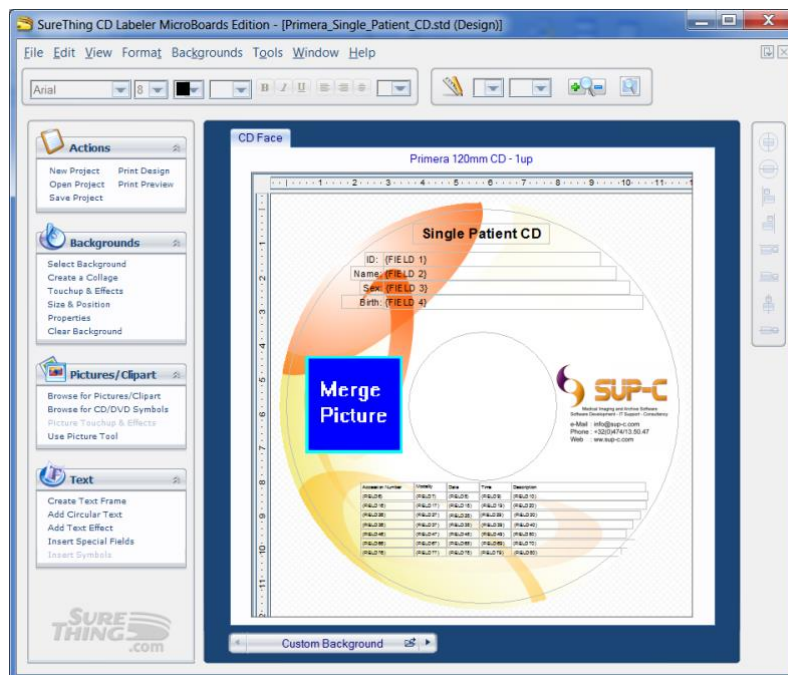
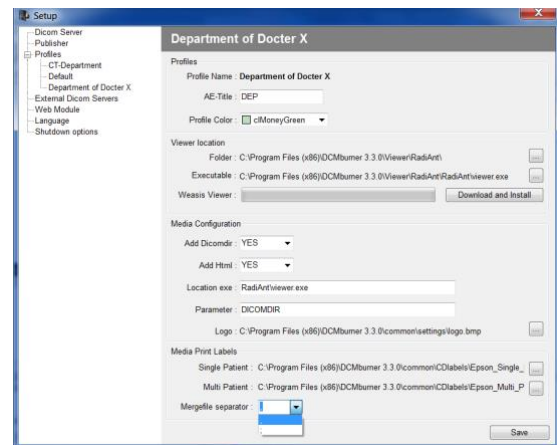
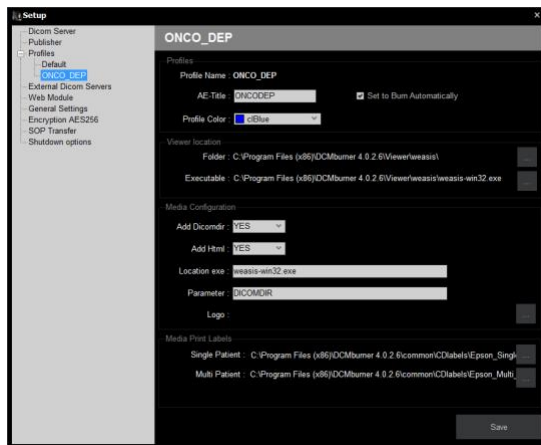
Setup – Profiles – Media Configuration

- Add Dicomdir, standard this is selected. Most of the Dicom viewers need this file to access the images written on the media. If the viewer doesn't make use of the dicomdir you can select NO. In demo mode this cannot be edit.
- Add Html, the html option is to view the studies in a standard web viewer. This option is useful to provide your customer an easy way to view the images and even copy the Jpeg images to their system.
- Location exe, this field is automatically filled in when you've selected the folder and executable. But in some cases, is needed to overwrite this value.
- Parameter, depending on which viewer you use this value can be set to DICOM or DICOMDIR.
- Logo, press the right button to select the preferred logo. The dimensions for the BMP file are width 402 pixels on height 140 pixels.



Setup – Profiles – Media Print Labels

- Select the CD labels for the Single or Multi Patient Media. The standard example labels for the selected publisher are already filled in.
- Standard labels for the Epson publisher are “Epson_Single_Patient_CD.tdd” and “Epson_Multi_Patient_CD.tdd”
- Standard labels for the Primera publisher are “Primera_Single_Patient_CD.std” and “Primera_Multi_Patient_CD.std”
- Mergefile Separator, for the Primera publishers you need to configure the separator of the merge file. The merge file provides the patient information that is printed on the media label. Standard the comma is used. In some cases, depending on the windows language settings, a semicolon is needed to separate the label fields in the SureThing label design program that handles the print command.



Setup – Profiles – External Dicom Server

This section describes how to configure external Dicom server or Dicom SCP (Service Class providers). Normally the dicom studies are send by medical modalities, but you have also the possibility to retrieve the studies from the existing dicom scp's. In order to retrieve dicom studies you have to configure the dicom servers or viewers (scp) with the dicom settings of DCMburner. You can find these settings in the Setup - "Dicom Server" section. Which parameters are needed, Hostname or the IP-address, Port Number and the AE-Title. Ones you configure your SCP's you can add the "External Dicom Server".

Adding External Dicom Server

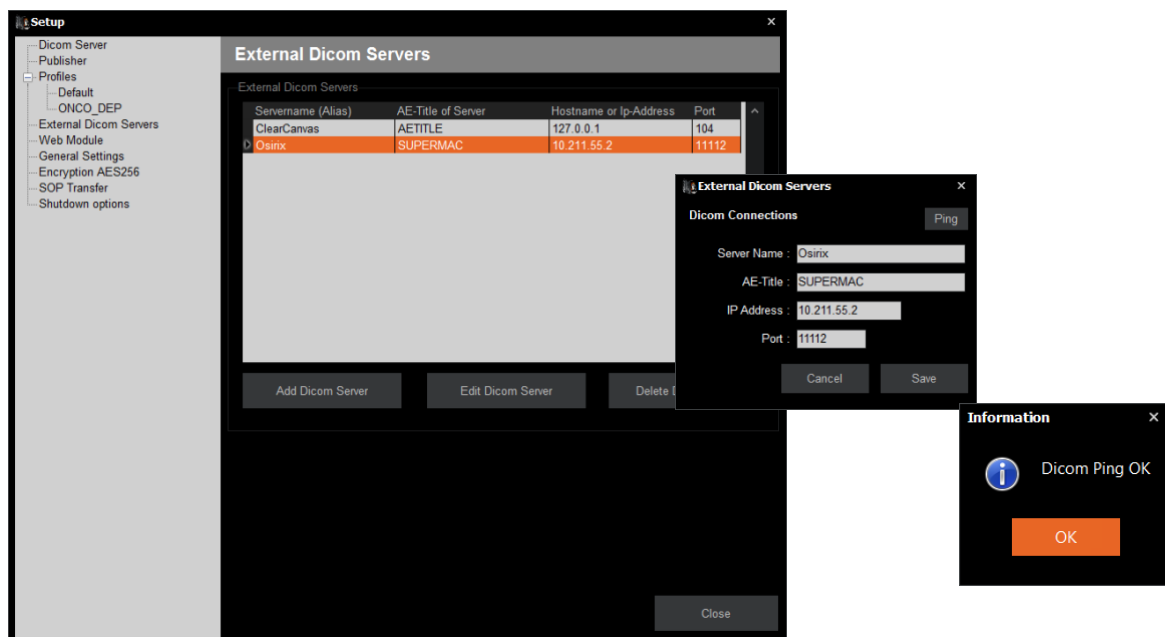
- To add an external Dicom Server press the "Add Dicom Server" button.
- Fill-in the server's name, this is the AE-Title or an Alias.
- Add the AE-Title of the external dicom server.
- Add the IP-Address of the external dicom server.
- Add the Port of the external dicom server.
- Press the ping button to test the Dicom connection. If the Dicom ping fails, you have to check your dicom setting in the SCP.

Edit External Dicom Server

- Edit an existing external dicom server and test this with the dicom ping.

Delete External Dicom Server

- If an existing external dicom server isn't needed any more then delete this.



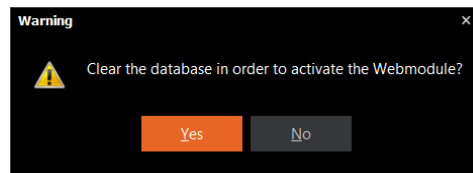
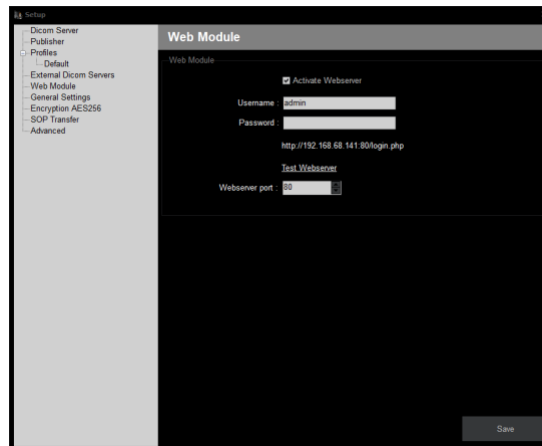
Note: For testing, disable your firewall, if everything's work well you can enable your Firewall again. Make sure that you pass the port of the external dicom server and the port of then DCMburner. Otherwise, the Dicom ping and c-store is blocked.

Setup – Profiles – Web module

This section describes how to configure and install the web server module. The web module gives you the opportunity to burn CD's or DVDs from other computer systems that has access to the system where the DCMburner is installed.

Setup the Web module

- Standard the Web Module is activated, if you don't need this option, you can disable it.
- Make a choice for the Username and Password. You will need it later to log into the DCMburner web module. A password is not needed but recommendable.
- The warning form let you know that the database is cleared. This is needed because only the new studies are directly sent to the webserver module. Click yes to activate and close DCMburner. When restarting DCMburner the webserver will also automatically restart and configured.
- Your system is now ready for the DCMburner web module.

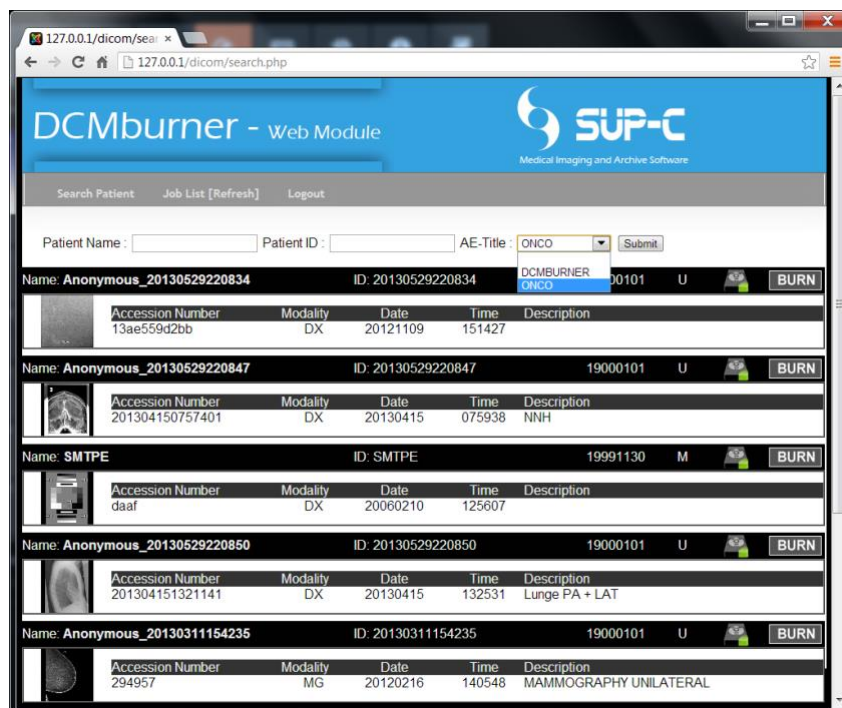


Test the DCMburner Web module

- Go to the link “Test Webserver” in the Setup – Web Module or start your local web browser and go to http://127.0.0.1/login_form.php If you want to test this from another system then type “http://IP_Address_of_DCMburner/login_form.php”
- If everything is configured properly you will see the screen below.
- Fill-in your Username and Password and press the “Login” button.

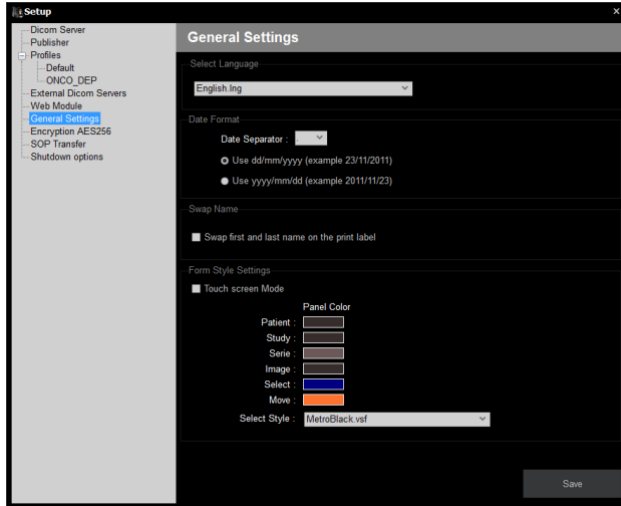


- Press the “Submit” button to get the Studies from DCMburner. You can fill-in the patient Name or ID or use just a part of it. Also, you can select the AE-Title where the study is sent to.
- If you want to create a Study on CD/DVD, press the “Burn” button.
- The “Job List” shows the Studies that already burned or in progress. This page is be refreshed every 10 seconds.
- For accessing the DCMburner web module on another system make sure that the firewall is allowing the port 80. The web module is available on “http://IP_Address_of_DCMburner/login_form.php”.



Setup – General Settings - Language

Select the language that you want to use. You have to restart DCMburner to activate this option. In case your language is not available, you have the option to create your own. In the main folder of DCMburner located at “C:\Program Files (x86)\DCMburner 3.3.0\language\” you find the language files. Copy the English.lng file and rename the copy to your own language and edit this. This is then available in the language selection.



Setup – General Settings – Date Format

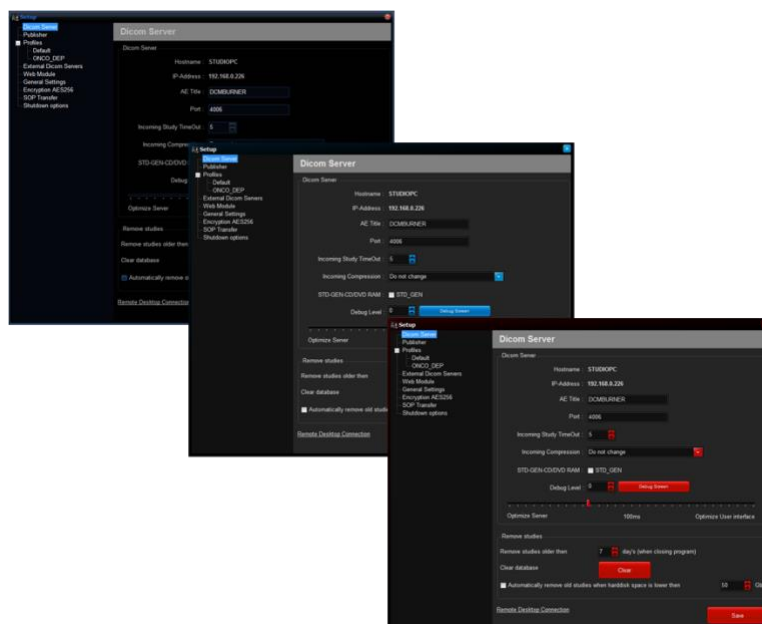
- Date separator, choose your preferred date separator, independent from the Windows settings.
- The date format can also be customized to your needs.

Setup – General Settings - Swap Name

- In some cases you prefer to change the position of the first name or last name.

Setup – General Settings – Form Style Settings

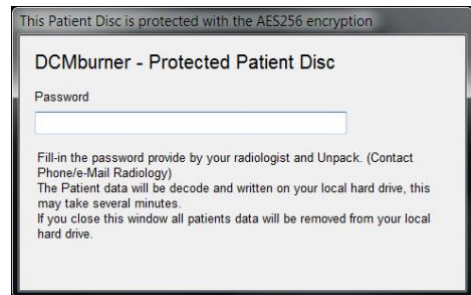
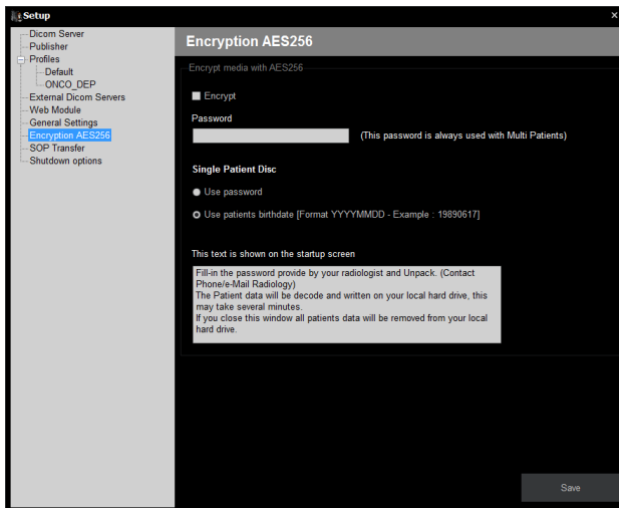
- Touch Screen Mode, when enabled the main form will be maximized and on top of all other forms.
- You can change the colors of panels in the main screen by clicking on the referring color. Choose the preferred color and press OK.
- Select Style, there are several Styles available in DCMburner. Standard is the MetroBlack Style selected.



Setup – Encryption AES 256

In some countries it's mandatory to encrypt portable media. With Encryption AES 256 functionality you can encrypt all data that's stored on the CD or DVD. Using a powerful 256-bit encryption algorithm, AES Crypt can safely secure your most sensitive files. Once a file is encrypted, you do not have to worry about a person reading your sensitive information, as an encrypted file is completely useless without the password. It simply cannot be read.

- Encrypt, select if you want all data on CD or DVD is encrypt.
- Password, there is no such thing as a perfect password. A committed hacker can crack any password, given enough time and the right "dictionary" or "brute force" tools. But just like breaking into a car, if the protection is strong enough, the hacker will become discouraged and commonly give up before the protection fails. The password is always used if the media is a Multi Patients disc.
- Single Patient Disc, you can choose to use the Password or the Patients Birth Date. If you use the Patients Birth Date than keep in mind that the format is YYYYMMDD, meaning YYYY is the Year, MM is the Month and DD is the Day. For example, 19890617.
- Text Box, here you write a message for your referring physicians. For example, how to obtain the password. When the CD/DVD Startup Screen appears, this message will be shown.



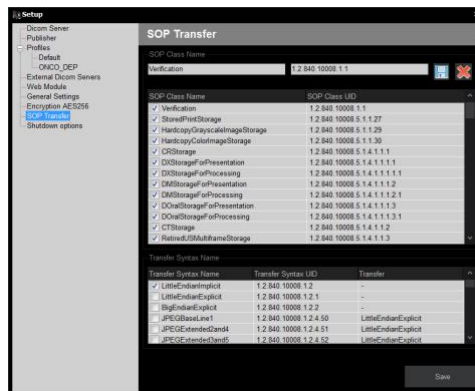
Setup – SOP Transfer

In some cases, it's needed to add SOP Classes, for instance an SOP Class that's related to the brand of the medical modality. This module gives you the opportunity to add not common Classes.

SOP Class, a Service-Object Pair (SOP) Class is defined by the union of an Information Object Definition (IOD) and a DICOM Service Elements (DIMSE). The SOP Class definition contains the rules and semantics which may restrict the use of the services in the DIMSE Service Group or the Attributes of the IOD.

Transfer Syntax, is the language used in DICOM to describe the DICOM file format and the network transfer methods.

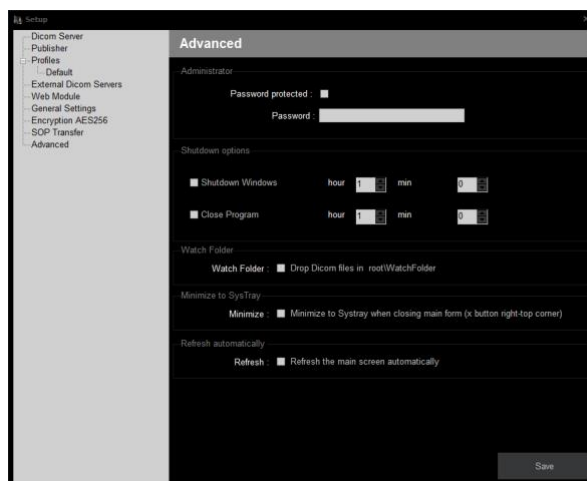
- SOP Class Name, here you can add, delete or edit the SOP Classes. Or select or unselect existing Classes.
- Transfer Syntax Name, the most common Dicom Transfer are available, you can select the one that is needed according to your Dicom modality. In case you have select the STD-GEN-CD/DVD RAM you best select the LittleEndianExplicit because the Dicom Dir is using this format.



Setup – Advanced options

This section describes how you can set the password and automatically close DCMburner or Shutdown Windows.

- If “Password protected” is selected, then you have to fill-in your password when starting DCMburner. Also, the Setup is now protected with a password.
- Shutdown Windows, if select then Windows will shut down in a proper way at the selected time.
- Close DCMburner, if select then DCMburner will close in a proper way at the selected time.
- If you enable the “Watch Folder” you can drop dicom files in the DCMburner x/WatchFolder.
- Enable “Minimize” to show the DCMburner icon in the systray.
- If you enable the “Refresh” the main screen will be refreshed automatically.



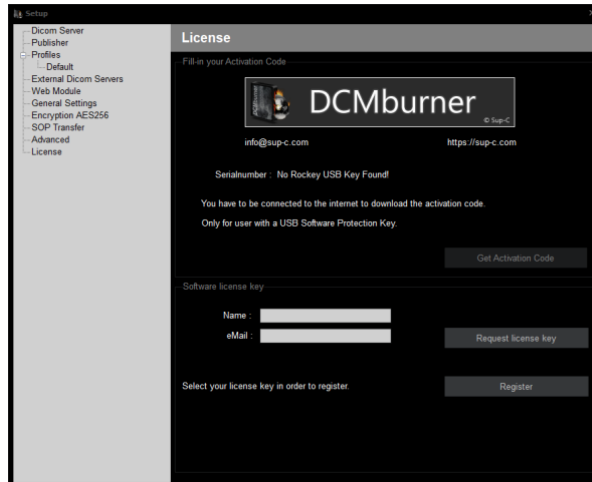
Setup – License

How to activate the Rockey USB Software Protection Key

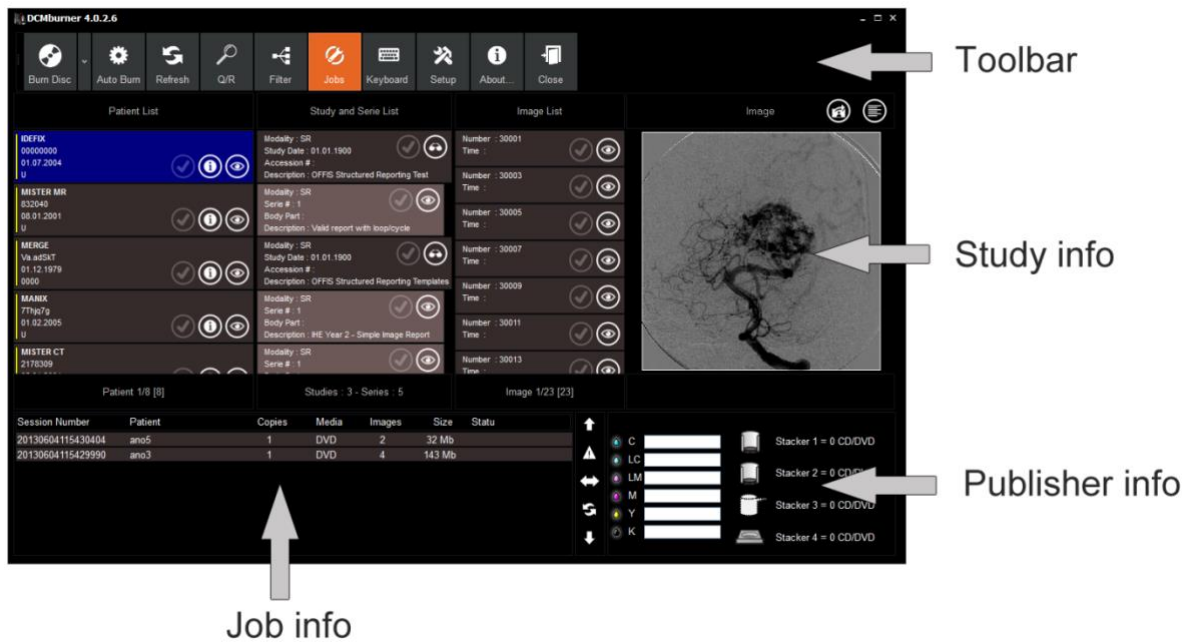
- Go to page 20 for more info.

How to activate by a license file based on the computer hardware

- Go to page 21 for more info.



Getting Started



Explaining the DCMburner Software

The main screen consists of four parts,

Toolbar

- The toolbar consist of several buttons, which each of them represent an action.

Study info

- In this section are the patients, Studies, Series and Images displayed. You can select the preferred images for burning the media. Also anonymize, delete or view the Patient info.

Job info

- Here you find the burning progress of the burned Patient studies.

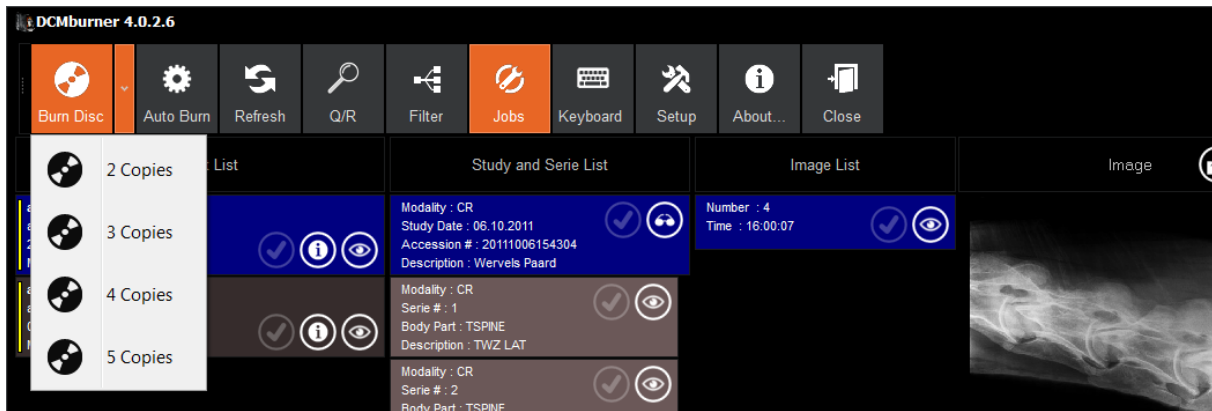
Publisher info

- This screen shows the ink level and/or Media count of the publisher. This screen may vary depending on which publisher you are using.

Toolbar

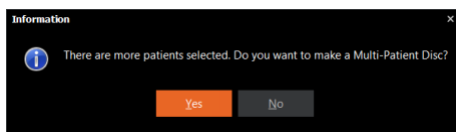
Burn Disc

This button is used to burn the selected studies. It is also possible to burn multiple copies of the selected patients or studies.



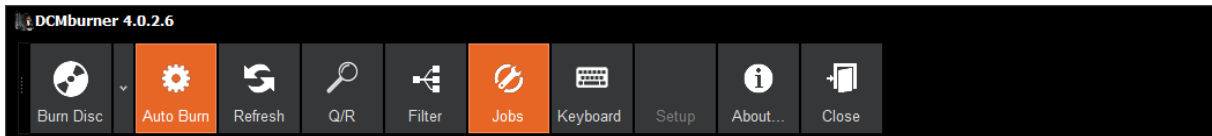
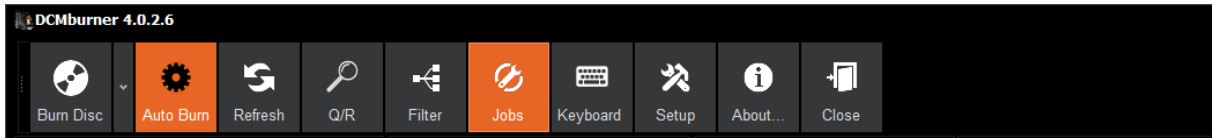
When select more than one patient and you want to burn them, you get the following message “There are more patients selected. Do you want to make a Multi-Patient Disc?” If you choose for the Multi-Patient Disc then all the selected patients will be burn on one CD/DVD. Otherwise, the program will burn several Single-Patient Disc's.

To burn just one or more studies from one patient you can also select or deselect the preferred study in the Study-info part.

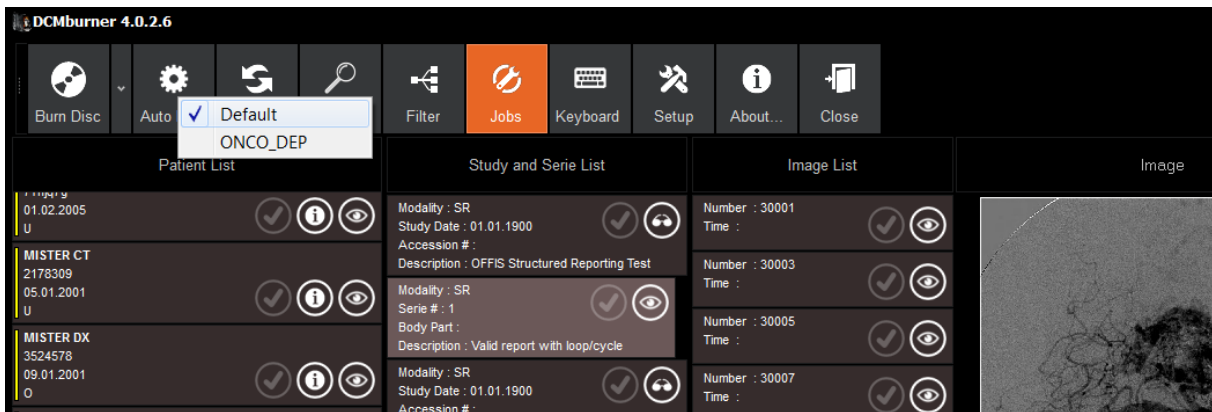


Auto Burn

Select this button to go in automatic mode. This means that every patient will be burn automatically on CD or DVD. When the program is in “Auto Burn” it’s also possible to select manual another patient. The Setup button is disabled if you’re in “Auto Burn”.

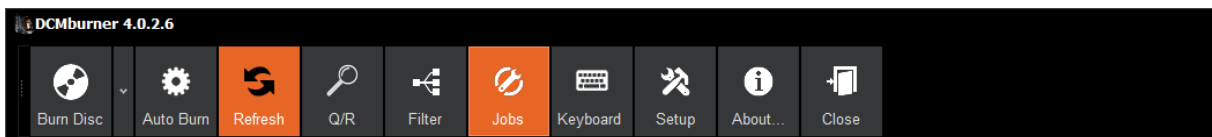


If the “Auto Burn” is not active, you can set the preferred profile to burn automatically by clicking with the right mouse button and select or deselect the profile. When you press the “Auto Burn” button with the left mouse button it will be activated.



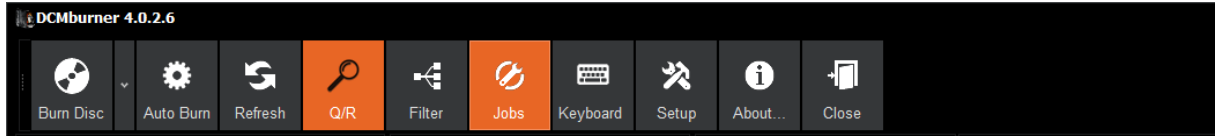
Refresh

Use this to refresh the database query, the patient and study info is updated.



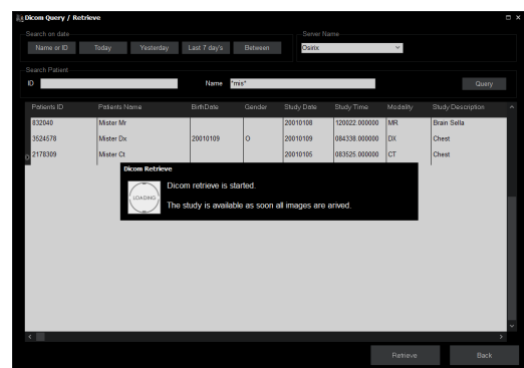
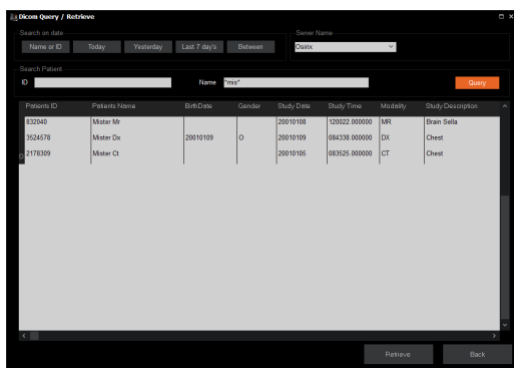
Q/R

Query/Retrieve gives you the opportunity to Query and Retrieve studies from External Dicom Servers. The “Setup - External Dicom Server” section explain how you add External Dicom Servers.

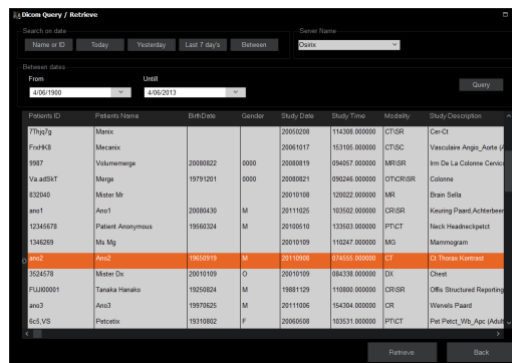


To retrieve some studies from external servers you first have to select the Server Name. In this dropdown box you find all the External Dicom Servers you have added in the “Setup - External Dicom Server” section.

- Name or ID, here you can fill-in the Patient ID or Name or a part of it. Use the * in case only some part of the Name or ID is given in.
- Query to show all studies that are match the ID or Name.
- To retrieve the study, double click in the result grid or press the “Retrieve” button. Go back to the main screen and refresh. The study is now shown as an incoming patient.

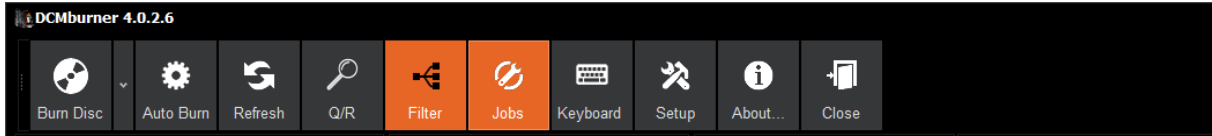


- “Today” button Query all the studies from today, queried from the selected Server Name.
- “Yesterday” button Query all the studies from yesterday, queried from the selected Server Name.
- “Last 7 days” button Query all the studies from the last seven days, queried from the selected Server Name.
- “Between” button Query all the studies between the “From - Until” date, queried from the selected Server Name.

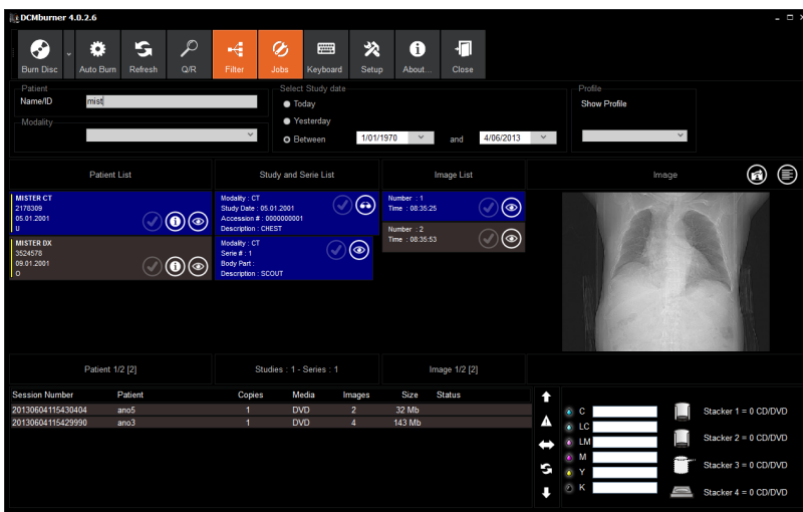


Filter

This option filters the Patient and Study info. The filter-screen appears under the toolbar when selecting the filter button.



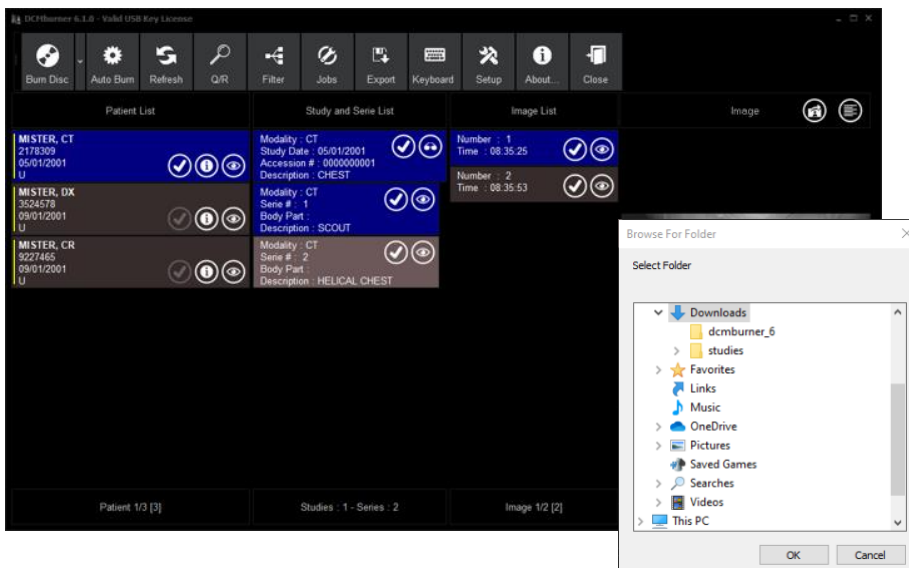
- “Patient Name/ID” fill-in the Patient Name/ID or just a part of it. You don’t have to make use of some wildcards.
- “Modality” to filter on modality you just has to select it.
- “Select Study date” Select today, yesterday or between.
- Filter the preferred profile, select “Show Profile”.
- To remove the filter result you have to press the “Filter” button again and refresh.



Export

With this function you can export the selected studies to a local folder, network folder or USB key.

- Select one or more studies.
- Press the “Export” button.
- Select your location and press OK.
- The content that’s normally written to a CD/DVD is now copied to your selected folder.



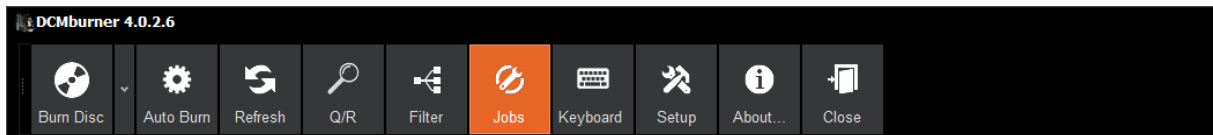
Keyboard

You can activate the On-Screen Keyboard with the “Keyboard” button. This is useful when working in Touch Screen Mode. The Keyboard form is always on top of the other forms.



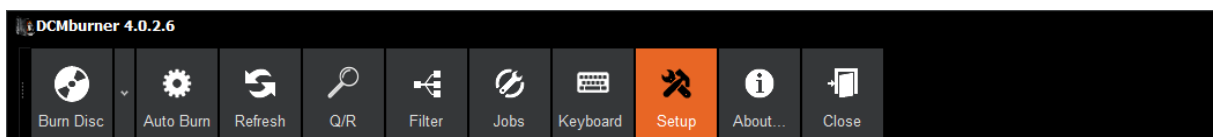
Jobs

Toggle this button shows or hides the Job Info screen.



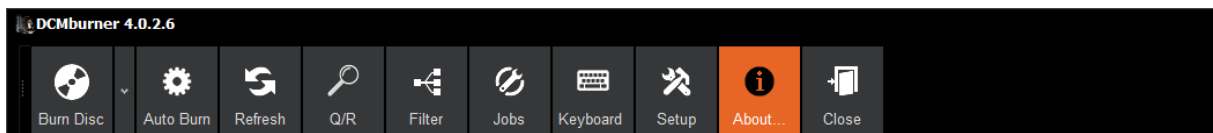
Setup

Here you can configure the DCMburner. For more information go to section - Configure the DCMburner



About

Here you find more information regarding the “End User License and Subscription Agreement”.

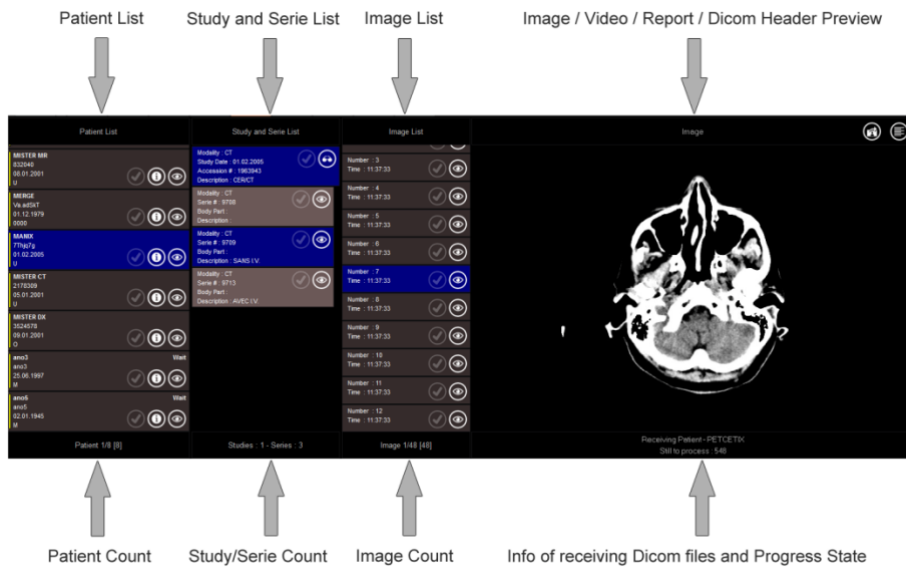


Close

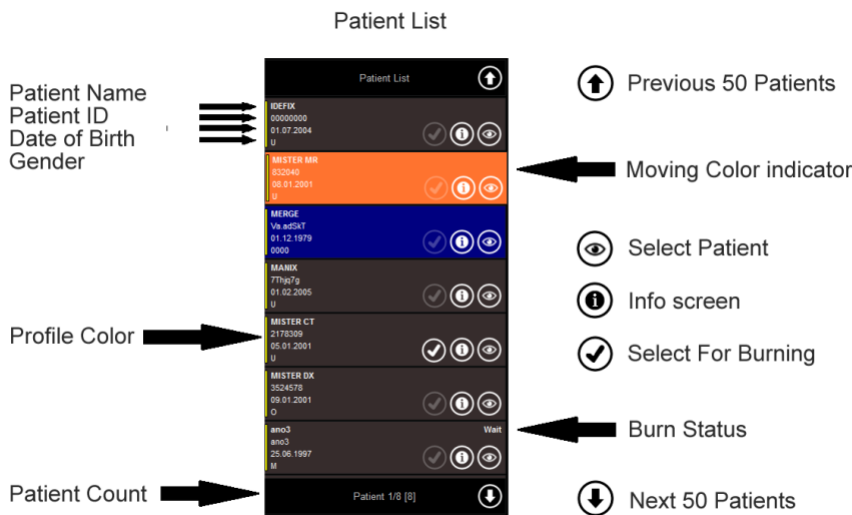
Use this button to close the program in a proper way.

Patient/Study Screen

This screen gives you an overview of the patients that are stored in the database.



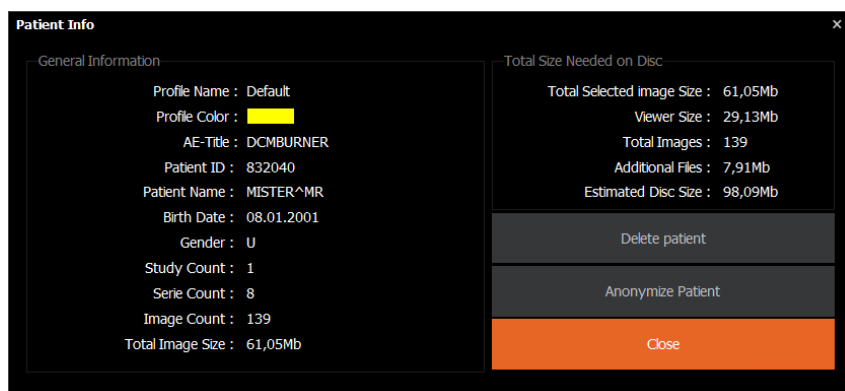
Patient List



- The basic patient information is located on the left side of the list.
- The Profile color indicates which profile is set for this patient. The profile is selected by the incoming AE-Title. The color you can edit in the Setup / Profiles section.
- Patient Count shows you the number of patients. If there are more than 50 patients in the list the Arrow Up/Down are shown on the patient list. Use these arrows to view the next or previous 50 patients.
- The moving Color indicator is highlighting when you press and drag up or downwards. This you can do with the mouse left button or touch screen.
- To select a patient click on the “Select Patient” icon. The color will change to the preset that is set in the setup / Form Style Settings section.
- If you want more patient info or you want to anonymize or delete click on the “Info Screen” Icon. More info at the Info Screen part.
- You can select or unselect the “Select For Burning” icon in order to burn to the media. The state of the icon is applicable to all studies.

Patient Info Screen

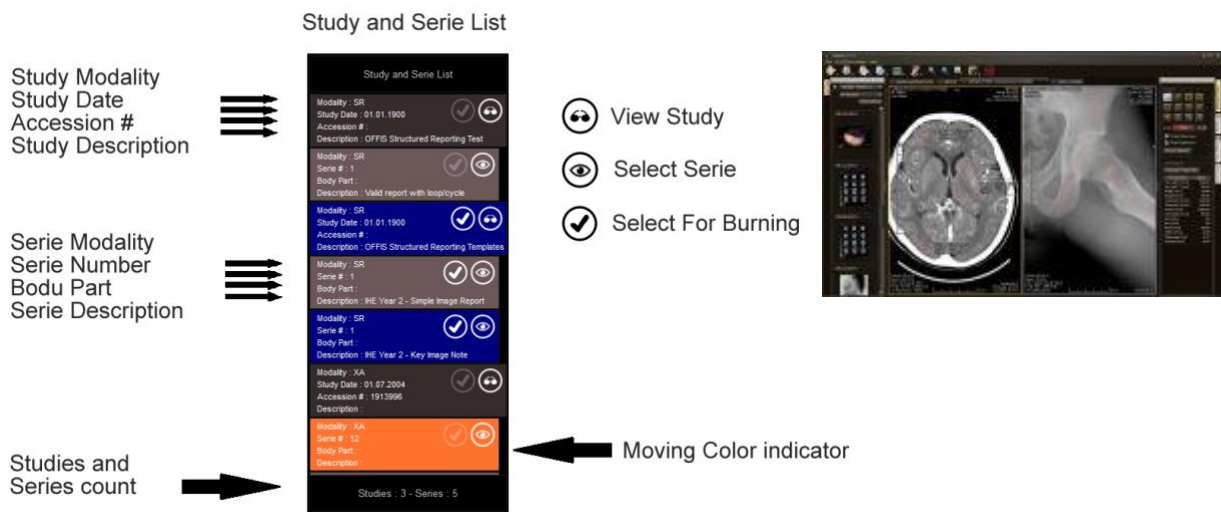
This screen gives you more information regarding the Study/Series/Image count. Here you can verify if all the send Images are arrived. If you select the Patient to publish on the media you can view the estimated disc size and total of images that are selected. Additionally you can delete or anonymize the patient.



- In the "General Information" part you find to selected profile, basic patient and study info.
- The "Total Size Needed on Disc" gives you an indication how much disc space is needed on the media.
- If you Delete a Patient all Images will be lost in DCMburner. If needed you can always push or Retrieve the images.
- In some cases it's needed to Anonymize the Patient info, Click on the "Anonymize Patient" button to change the Dicom Header info regarding the selected patient.

Study and Serie list

This list gives you an overview of the related studies/Series from the selected patient that is stored in the database. The “Study and Series list” shows all the studies related to the selected patient. You can individually select one or more Studies/Series and burn them on CD or DVD.



- The study information you find in the dark gray panel or blue if selected. Here you find the Study Modality, Date, Accession Number or the Study Description. If you select the study the first series that comes with the study is selected.
- The lighter gray series panel gives you more info regarding the Series Modality, Series Number, Body Part or Series Description. If you select a series the related study will be selected.
- At the bottom you find the Studies and Series counter.
- In the Study panel you can select the “View Study” icon. This will open the Dicom Weasis viewer. This Dicom viewer contains all the standard Dicom Viewing features and more. Weasis is not a part of DCMburner, but it’s a very good Java open source viewer. More info at <http://www.dcm4che.org/confluence/display/WEA/Keyboard+and+Mouse+Shortcuts>
- To select a Series, click on the “Select Series” icon. The color of the Serie and related Study will change to the preset that is set in the setup / Form Style Settings section.
- You can select or unselect the “Select for Burning” icon to burn to the media. The state of the icon is applicable to the related Study and Images.
- The moving Color indicator is highlighting when you press and drag up or downwards. This you can do with the mouse left button or touch screen.

Image List

This list gives you the related Images to the selected Series.

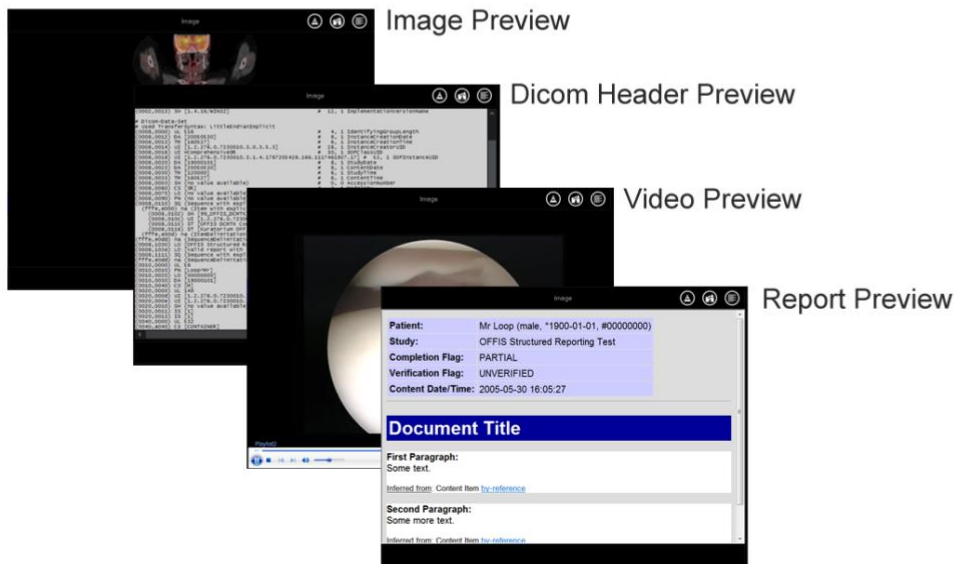
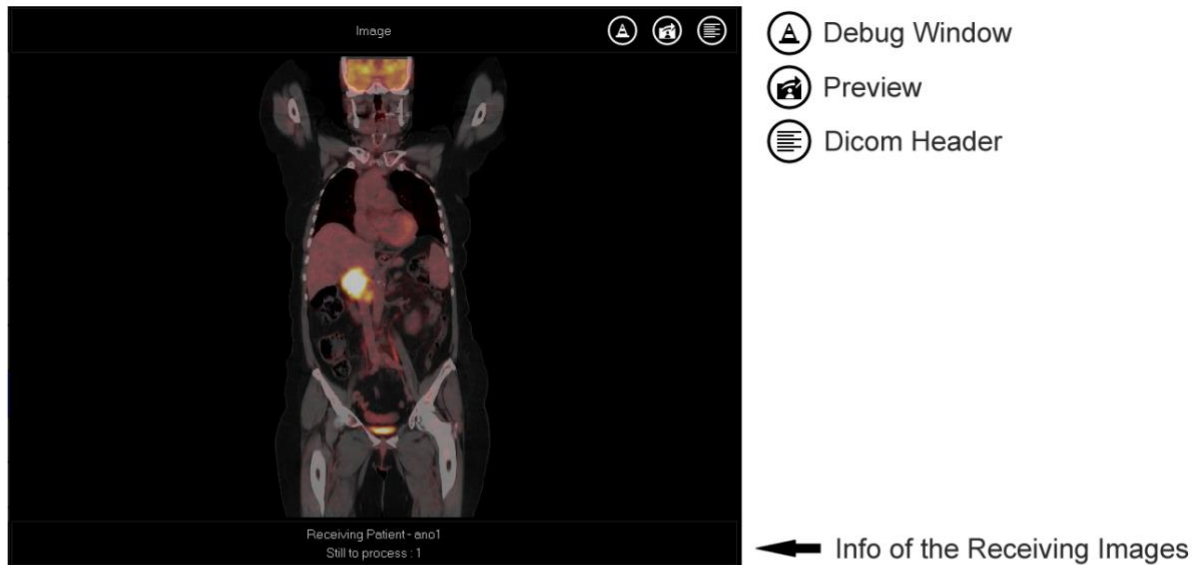


- The basic Image information is located on the left side of the list. The Image number and Acquisition time is shown.
- Image Count shows you the number of Images related to the Series. If there are more than 50 images in the list the Arrow Up/Down are shown on the Image list. Use these arrows to view the next or previous 50 Images.
- You can select or unselect the "Select for Burning" icon to burn to the media. The state of the icon is applicable to all Patient, Studies and Series.
- To select a image click on the "Select Image" icon. The color will change to the preset that is set in the setup / Form Style Settings section. At the Right side you see the Preview Image/Video or Report.
- The moving Color indicator is highlighting when you press and drag up or downwards. This you can do with the mouse left button or touch screen.

Image / Video / Report / Dicom Header Preview

This part explains the preview of your received Dicom files.

Image / Video / Report / Dicom Header Preview



- The “Debug Window” icon is only shown if the debug mode is on. If DCMburner is set in Touch Screen Mode, the Debug window can go behind the main screen. When you click on this icon the debug window comes in front.
- The preview icon shows the Image, Video or Report preview in case the Dicom Header is in front.
- To view the Dicom Header press this icon. You can select the tags for copying.
- In case DCMburner is retrieving or processing Dicom files you can view this at the bottom of the preview screen.

Jobs / Publisher Info Screen

This part of the form gives you an overview of the burning progress and Publisher state.

Job / Publisher Info

Session Number	Patient	Copies	Media	Images	Size	Status
20130605160138824	MISTER/MX	1	CD	2	44 Mb	
20130605160141018	MISTER/MR	1	CD	35	49 Mb	
20130605155713951	PHENIX	1	CD	1	39 Mb	
20130605155656952	Test/S R	1	CD	1	30 Mb	
20130605155640016	ano5	1	CD	2	32 Mb	
20130605155606312	MERGE	1	CD	4	75 Mb	Retry
20130605155435760	MISTER/CT	1	CD	2	31 Mb	
20130605155435303	MISTER/MR	1	CD	20	41 Mb	
20130605160365800	MISTER/MY	1	CD	2	44 Mb	

Burn / Print Jobs

Publisher info

- Session Number, this unique number is a representation of the job session.
- Patient, for a single patient the name is displayed otherwise the message is Multi Patients.
- Copy, the number of copies to burn.
- Media can be CD or DVD.
- Images, the number of images on the media.
- Size, the actual disc size that is needed on the disc.
- Status is depending on which Disc Publisher is selected.
- Possible message is
 - Wait, still building the media content.
 - Preprocessing, the job file is created and waiting for the publisher.
 - In-Process, the job is processed by the publisher.
 - Completed, the job is completed.
 - Error, an error occurred. The line is colored red. In case the error was produced by the disc publisher you can re launch the job by pressing the Retry button.

Vertical Job Toolbar

- Enlarge the Job / Publisher screen
- Error indicator
- Toggle Publisher screen
- Start / Stop refresh
- Reduce the Job / Publisher screen

- Sometimes it's needed to view more previous job files, in this case you can enlarge the view of the Job screen.
- The error indicator turns red when an error occurred by the Publisher or images were added to the study after the job has been launched. In case images were added afterwards, then enlarge the Time-out in the Setup – Dicom Server section. Sometimes the network is slow and you have to increase the Time-Out. In some cases you have to set the Time-Out even to 120 or higher.
- To view only the job status, you can hide the Publisher Status by pressing the Toggle icon.
- Sometimes you want to view the jobs for more info. The Job section is refreshed every 5 seconds. To stop the refresh, click on this icon. When it turns red than the auto refresh is stopped.
- You can set the normal Jobs view back by pressing the reduce icon.

Ink Level Screen

This screen is different depending on which publisher is used. For the Local Drive the screen is not showed.

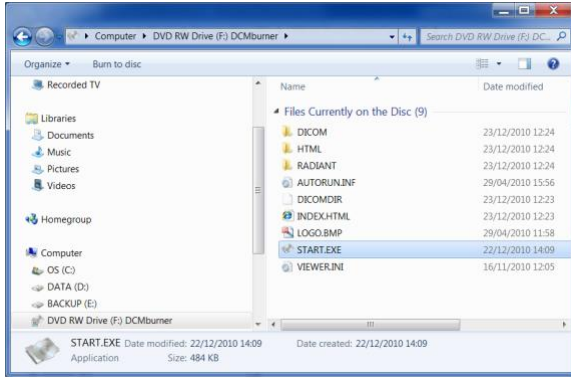
Stacker 1 = 16 CD/DVD
 Stacker 2 = 12 CD/DVD
 Stacker 3 not in use
 Stacker 4 = 0 CD/DVD

Black : Left Bin = 6 CD/DVD
 Color :
 Yellow :
 Cyan :
 Magenta : Right Bin = 4 CD/DVD

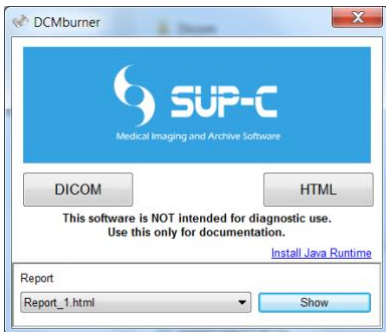
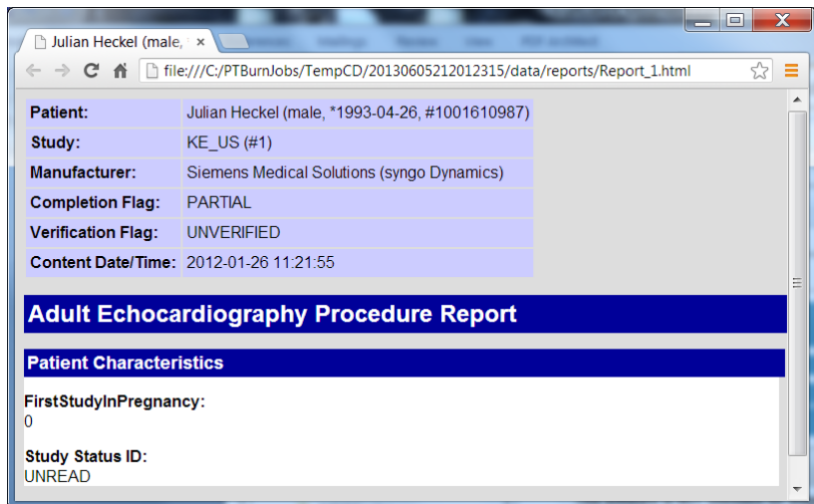
The Disc Content

This section describes how you can view the disc content.

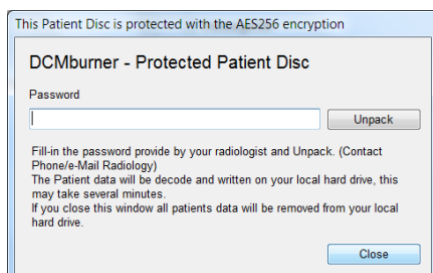
In Windows XP the viewer starts automatically if the autorun is activated. Later versions of Windows don't support this option anymore. In the case you have to start this manually, open Windows Explorer and select the CD or DVD drive. On the right side you find the disc content. Double click on the start(.exe) icon to open the DCMburner startup screen.



In the DCMburner startup screen you have the possibility to open the Dicom viewer or the Html based viewer. If a Dicom Structure Report is available then you also can select the Report and View it in your web browser.



In case the AES 256 Encryption is enabled you first have to fill-in your password. If the password is correct the disc content will be copied to the local drive and the start program will be automatically opened. Close you're the Dicom viewer and hit the Close button. The temporary content will be erased on your local drive.



Dicom Viewer

Standard the Weasis Viewer software is installed. The Weasis Viewer is not a part of the DCMburner. This great open source Dicom Viewer is compatible with Windows, Apple OSX and Linux distributions. Weasis requires that a Java Runtime Environment (JRE 6 update 10 or greater) be installed on your machine to run. For more information about the viewer go to <http://www.dcm4che.org/confluence/display/WEA/Home>

Shortcuts

Selected view of the 2D DICOM Viewer	
T	Translate (pan) the image canvas
W	Window / Level
S	Series scroll
Z	Zoom
R	Rotation
M	Measure
Q	Context menu
Ctrl + Spacebar	Change to the next action
Ctrl + mouse drag	Accelerate the current action
Ctrl + Shift + mouse drag	Accelerate more the current action
Right click	Open the contextual menu for more options
Double click	Maximize the view or restore the layout (when layout has multiple views)
DICOM explorer	
Ctrl + click on the thumbnail	Select multiple series
Click on a thumbnail and then Shift + click on another one	Select all series between
Enter	Open the selected series in the default viewer
Click + drag a thumbnail in the main view	Display a series
Right click	Open the contextual menu for more options
Graphics	
Click on a graphic	Select a graphic
Click + mouse drag	In selection mode: select all the graphics inside the selection area. In drawing mode: draw the selected graphic shape.
Ctrl + A	Select all the graphics
Ctrl + D	Deselect all the graphics
Delete	Delete the selected graphics
Shift + click on a graphic	In selection mode: add or remove a graphic to the current selection. In drawing mode: force to draw on another graphic (without shift the graphic is selected).
Double click	Stop adding points for polyline (also available in the context menu)
Right click	Open the contextual menu for more options



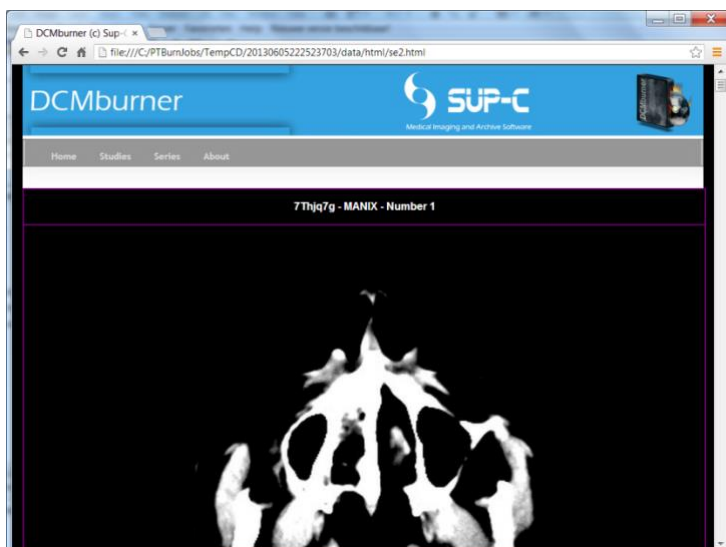
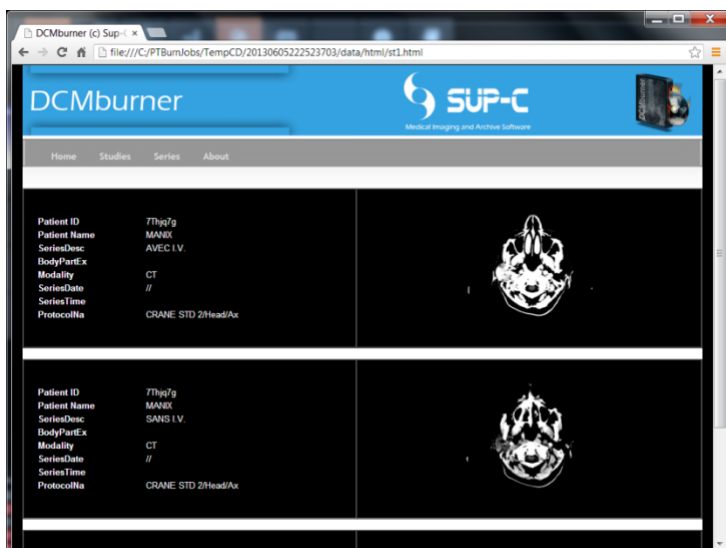
The HTML Viewer

This simple viewer shows the image in Jpeg format. This software is NOT intended for diagnostic use. Use this only for documentation.

The HTML viewer starts your standard web viewer. The tested web viewers are Internet Explorer, Google Chrome and FireFox. Other web viewers would normally have no problems with accessing the content.

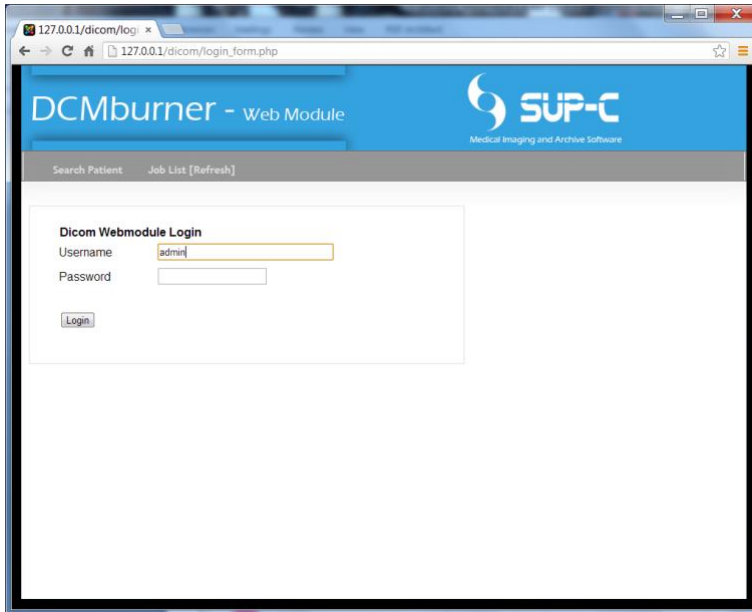
Click on the image to go deeper into the dicom structure. Meaning; study, series and image. Or make use of the menu structure.

- Home, shows all the patients on the disc.
- Studies, shows all the studies on the disc.
- Series, shows all the series on the disc.

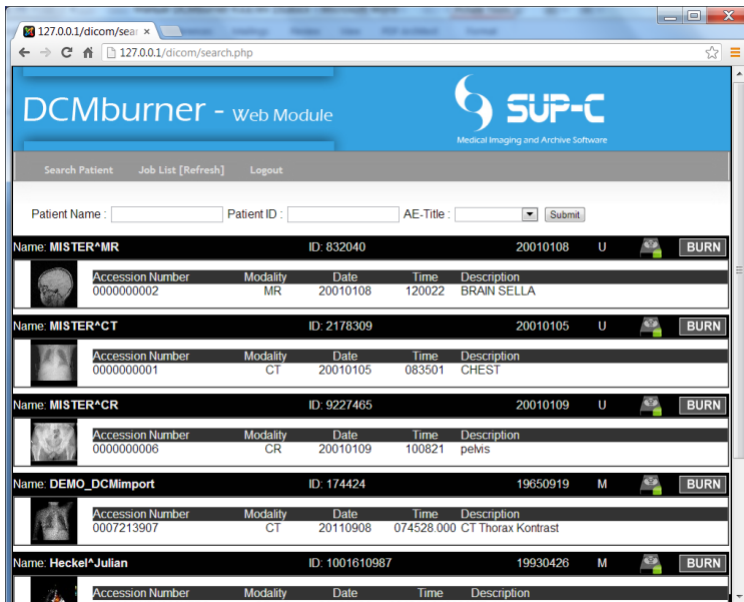


The DCMburner Web module

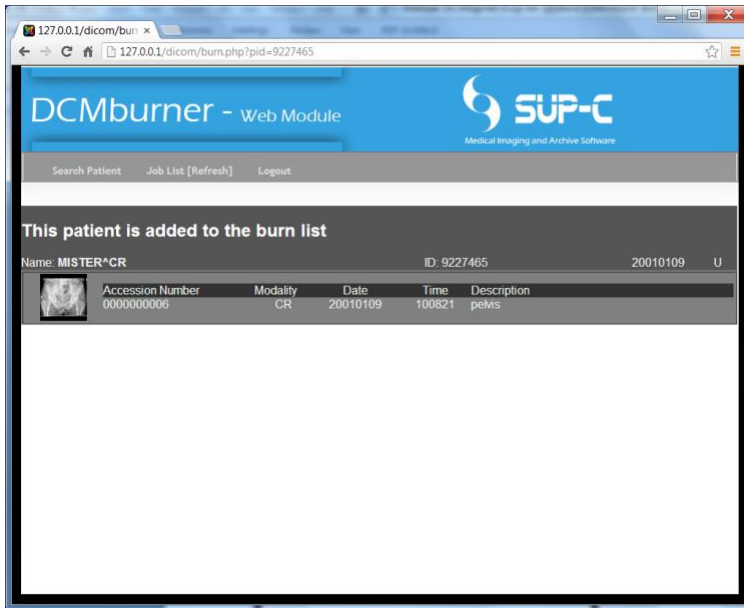
- Open your local web browser and go to <http://127.0.0.1/login.php> If you want to test this from another system then type “http://IP_Address_of_DCMburner/login.php”
- If everything is configured properly you will see the screen below.
- Fill-in your Username and Password and press the “Login” button. Standard the Username is admin and the Password is not fill-in.
- Click the Login button.



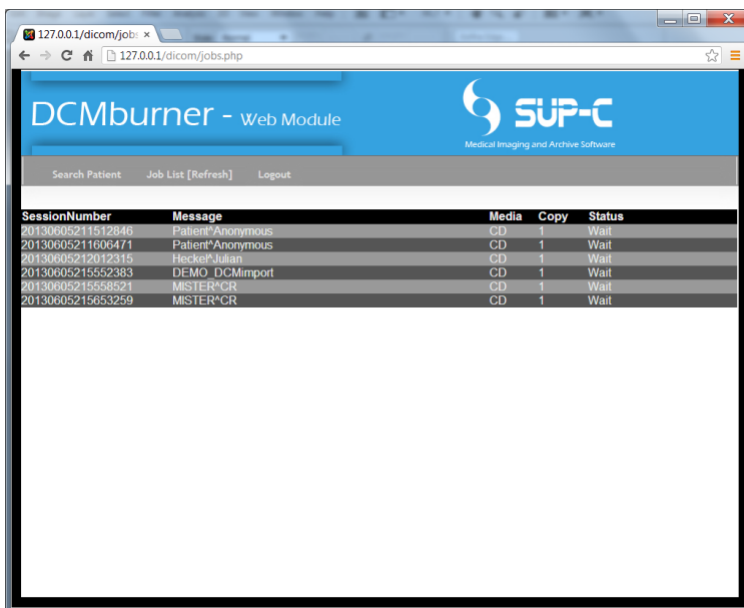
- Click on the “Submit” to show all patients / studies that are in the DCMburner database.
- You can also fill-in a part of the patient name or ID. No wildcards needed.
- Select the AE-Title to view only from this modality.
- Burn a patient study or studies just by click ones on the “Burn” button on the right side.



- After you click the “Burn” button another screen appears with the message “This patient is added to the burn list.”



- The Job List shows the progress of the burning process. Every 10 seconds this page will be refreshed.



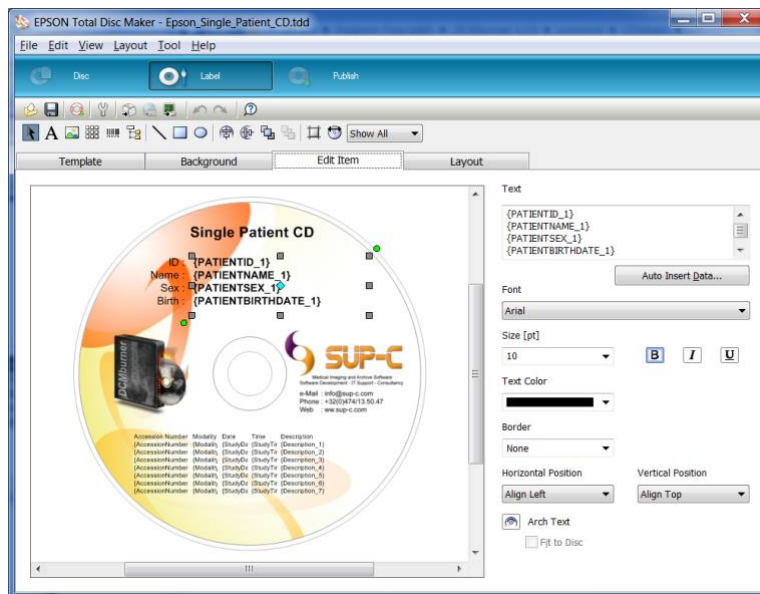
- You can access the webpage from different location and burn simultaneous CD's or DVD's, even if DCMburner is running in “Auto Mode”.
- Logout when you're finished.

Editing the Epson Label file

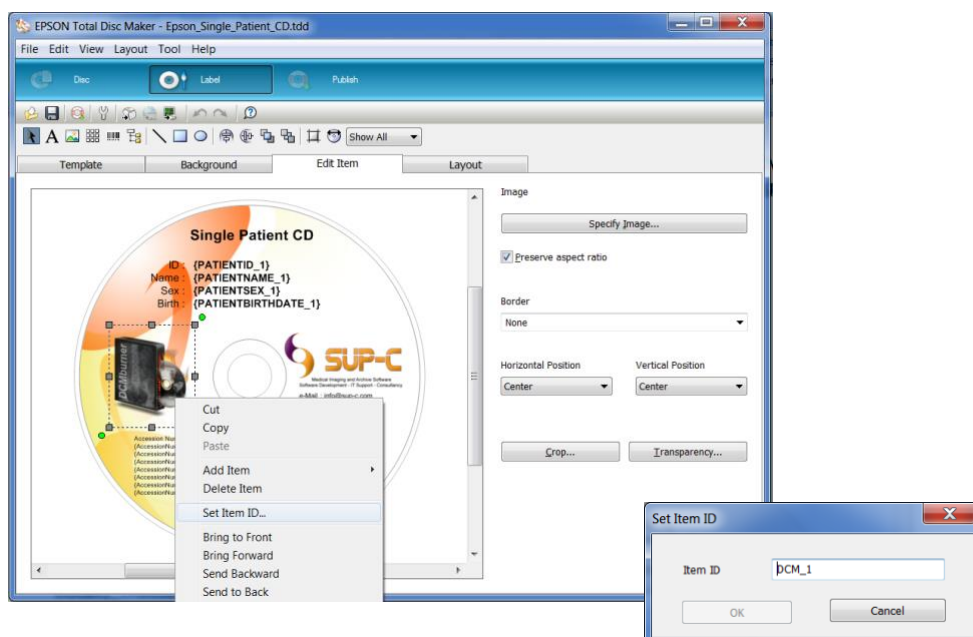
This section explains how to edit or build an Epson Label for printing on the CD or DVD.

You find the standard label files at “C:\Program Files (x86)\DCMburner x.x.x\common\CDlabels\”.

- Double click on the “Epson_Single_Patient_CD.tdd” to open this label.
- The Epson label file uses the merge.txt file to fill-in the data. You find the field description of the merge.txt file below.
- Example:
 - Add a text field and fill in {PATIENTID_1}. You can also adjust the font and colors. Save and test the label. If the label is printed you will notice that the {PATIENTID_1} is replaced by the Patient ID of the first Patient / Study.



- Add a image and right click. Select the “Set Item ID...” and fill in “DCM_1” for the first patient / study image or “DCM_2” for the second patient / study image. Save and test the label.



Example of the merge.txt file

```
DATE=actual date
TIME=actual tile
Studycount=number of studies
Session=unique session number
StudyID_1= Study ID of the first study
PatientName_1=Patient Name of the first study
PatientID_1=Patient ID of the first study
StudyDate_1=Study Date of the first study
StudyTime_1=Study Time of the first study
PatientSex_1=Patient Sex of the first study
PatientBirthDay_1=Patient Birthdate of the first study
StudyUID_1=Study User ID of the first study
Modality_1=Modality of the first study
AccessionNumber_1=Accession Number of the first study
RefPhysician_1=Referring Physician of the first study
Description_1=Study Description of the first study
DCM_1=Image location of the first study
Free_1_1=Free field 1 of the first study
Free_2_1= Free field 1 of the first study
Free_3_1= Free field 1 of the first study
Free_4_1= Free field 1 of the first study
Free_5_1= Free field 1 of the first study

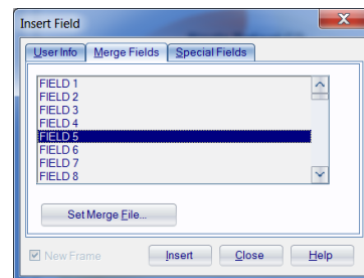
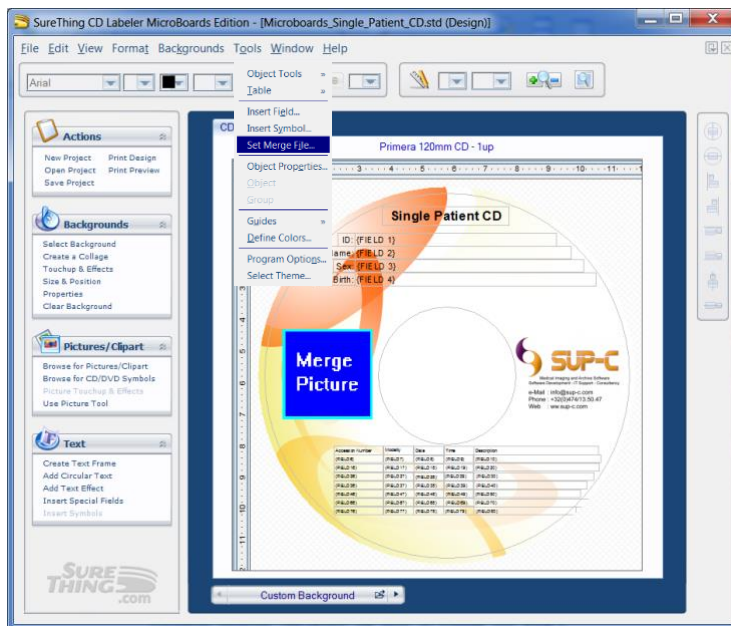
// Second study
StudyID_2= Study ID of the second study
PatientName_2=Patient Name of the second study
PatientID_2=Patient ID of the second study
StudyDate_2=Study Date of the second study
StudyTime_2=Study Time of the second study
Etc

// Third Study
StudyID_3= Study ID of the third study
```

Editing the Primera Label file

This section explains how to edit or build an Primera Label for printing on the CD or DVD. You find the standard label files at "C:\Program Files (x86)\DCMBurner x.x.x\common\CDlabels\".

- Double click on the "Primera_Single_Patient_CD.std" to open this label.
- To select the merge file (Patient data) go to Tools and select "Set Merge File".
- The label file uses the merge.txt file to fill-in the data. You find the field description of the merge.txt file below.
- To insert a field go to Tools and select "Insert field".



Example of the merge.txt file for the Single Patient Label

```
"PatientID";"PatientName";"PatientSex";"BirthDay";"AddImagePath";"AccessNr_1";"Modality_1";"Date_1";"Time_1";"Description_1";"Free_1_1";"Free_2_1";"Free_3_1";"Free_4_1";"Free_5_1";"AccessNr_2";"Modality_2";"Date_2";"Time_2";"Description_2";"Free_1_2";"Free_2_2";"Free_3_2";"Free_4_2";"Free_5_2";"AccessNr_3";"Modality_3";"Date_3";"Time_3";"Description_3";"Free_1_3";"Free_2_3";"Free_3_3";"Free_4_3";"Free_5_3";"AccessNr_4";"Modality_4";"Date_4";"Time_4";"Description_4";"Free_1_4";"Free_2_4";"Free_3_4";"Free_4_4";"Free_5_4";"AccessNr_5";"Modality_5";"Date_5";"Time_5";"Description_5";"Free_1_5";"Free_2_5";"Free_3_5";"Free_4_5";"Free_5_5";"AccessNr_6";"Modality_6";"Date_6";"Time_6";"Description_6";"Free_1_6";"Free_2_6";"Free_3_6";"Free_4_6";"Free_5_6";"AccessNr_7";"Modality_7";"Date_7";"Time_7";"Description_7";"Free_1_7";"Free_2_7";"Free_3_7";"Free_4_7";"Free_5_7";"AccessNr_8";"Modality_8";"Date_8";"Time_8";"Description_8";"Free_1_8";"Free_2_8";"Free_3_8";"Free_4_8";"Free_5_8";"AccessNr_9";"Modality_9";"Date_9";"Time_9";"Description_9";"Free_1_9";"Free_2_9";"Free_3_9";"Free_4_9";"Free_5_9";"AccessNr_10";"Modality_10";"Date_10";"Time_10";"Description_10";"Free_1_10";"Free_2_10";"Free_3_10";"Free_4_10";"Free_5_10";
```

Example of the merge.txt file for the Multi Patient Label

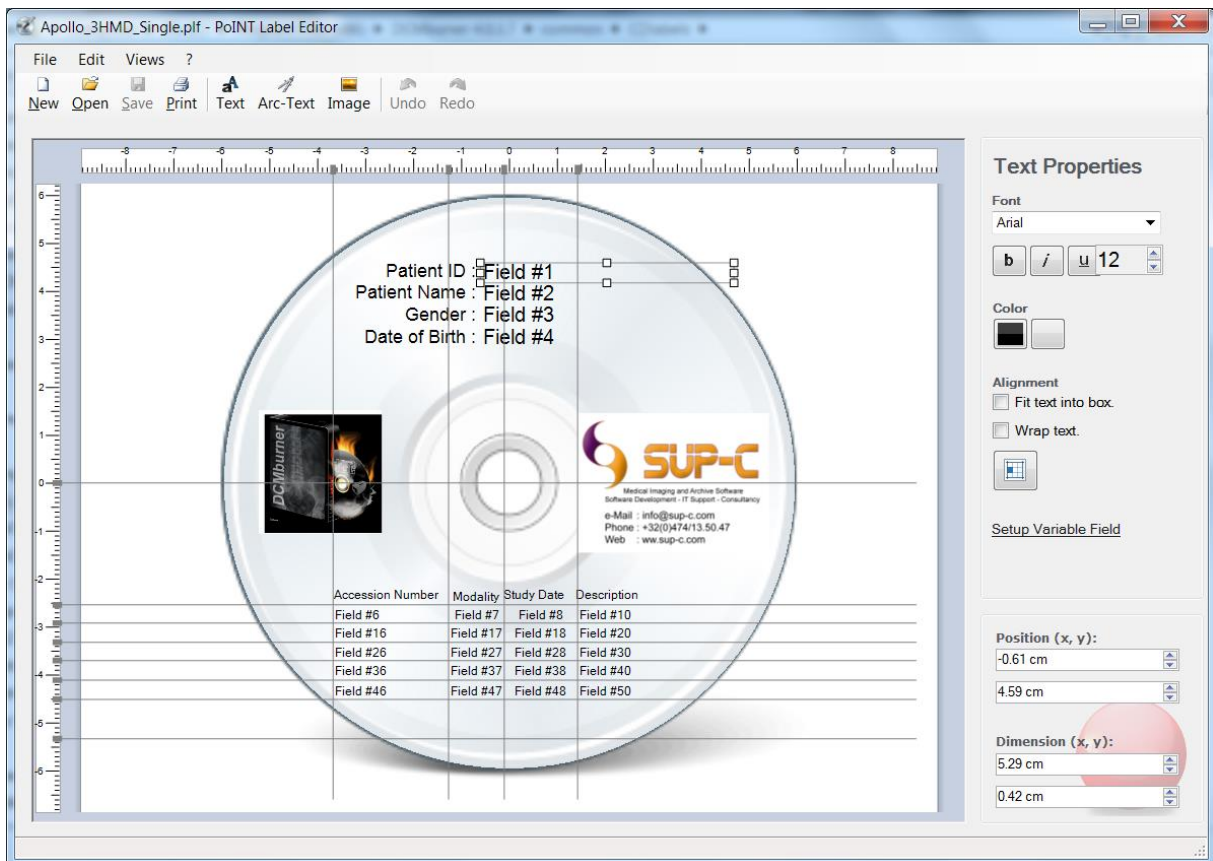
```
"StudyPatientID1 - StudyPatientName1 - StudyPatientSex1 - StudyPatientBirthDay1";"StudyAccessionNumber1 - StudyModality1 - StudyDate1 - StudyTime1 - StudyDescription1";"Free_1_1 - Free_2_1 - Free_3_1 - Free_4_1 - Free_5_1";"StudyPatientID2 - StudyPatientName2 - StudyPatientSex2 - StudyPatientBirthDay2";"StudyAccessionNumber2 - StudyModality2 - StudyDate2 - StudyTime2 - StudyDescription2";"Free_1_2 - Free_2_2 - Free_3_2 - Free_4_2 - Free_5_2";"StudyPatientID3 - StudyPatientName3 - StudyPatientSex3 - StudyPatientBirthDay3";"StudyAccessionNumber3 - StudyModality3 - StudyDate3 - StudyTime3 - StudyDescription3";"Free_1_3 - Free_2_3 - Free_3_3 - Free_4_3 - Free_5_3";"StudyPatientID4 - StudyPatientName4 - StudyPatientSex4 - StudyPatientBirthDay4";"StudyAccessionNumber4 - StudyModality4 - StudyDate4 - StudyTime4 - StudyDescription4";"Free_1_4 - Free_2_4 - Free_3_4 - Free_4_4 - Free_5_4";"StudyPatientID5 - StudyPatientName5 - StudyPatientSex5 - StudyPatientBirthDay5";"StudyAccessionNumber5 - StudyModality5 - StudyDate5 - StudyTime5 - StudyDescription5";"Free_1_5 - Free_2_5 - Free_3_5 - Free_4_5 - Free_5_5";"StudyPatientID6 - StudyPatientName6 - StudyPatientSex6 - StudyPatientBirthDay6";"StudyAccessionNumber6 - StudyModality6 - StudyDate6 - StudyTime6 - StudyDescription6";"Free_1_6 - Free_2_6 - Free_3_6 - Free_4_6 - Free_5_6";"StudyPatientID7 - StudyPatientName7 - StudyPatientSex7 - StudyPatientBirthDay7";"StudyAccessionNumber7 - StudyModality7 - StudyDate7 - StudyTime7 - StudyDescription7";"Free_1_7 - Free_2_7 - Free_3_7 - Free_4_7 - Free_5_7";"StudyPatientID8 - StudyPatientName8 - StudyPatientSex8 - StudyPatientBirthDay8";"StudyAccessionNumber8 - StudyModality8 - StudyDate8 - StudyTime8 - StudyDescription8";"Free_1_8 - Free_2_8 - Free_3_8 - Free_4_8 - Free_5_8";"StudyPatientID9 - StudyPatientName9 - StudyPatientSex9 - StudyPatientBirthDay9";"StudyAccessionNumber9 - StudyModality9 - StudyDate9 - StudyTime9 - StudyDescription9";"Free_1_9 - Free_2_9 - Free_3_9 - Free_4_9 - Free_5_9";"StudyPatientID10 - StudyPatientName10 - StudyPatientSex10 - StudyPatientBirthDay10";"StudyAccessionNumber10 - StudyModality10 - StudyDate10 - StudyTime10 - StudyDescription10";"Free_1_10 - Free_2_10 - Free_3_10 - Free_4_10 - Free_5_10";
```

Editing the Apollo 2HMD Disc Publisher Label file

This section explains how to edit or build a Apollo 2HMD Disc Publisher Label for printing on the CD or DVD.

You find the standard label files at "C:\Program Files (x86)\DCMburner x.x.x\common\CDlabels\".

- Double click on the "Apollo_3HMD_Single.plf" or "Apollo_3HMD_Multi.plf" to open this label.
- The label file uses the merge.dat file to fill-in the data. You find the field description of the merge.dat file below.
- To edit a field, select and click on the "Setup Variable Fields" to change the corresponding field.



Example of the merge.dat file for the Single Patient Label

```
"PatientID";"PatientName";"PatientSex";"BirthDay";"AddImagePath";"AccessNr_1";"Modality_1";"Date_1";"Time_1";"Description_1";"Free_1_1";"Free_2_1";"Free_3_1";"Free_4_1";"Free_5_1";"AccessNr_2";"Modality_2";"Date_2";"Time_2";"Description_2";"Free_1_2";"Free_2_2";"Free_3_2";"Free_4_2";"Free_5_2";"AccessNr_3";"Modality_3";"Date_3";"Time_3";"Description_3";"Free_1_3";"Free_2_3";"Free_3_3";"Free_4_3";"Free_5_3";"AccessNr_4";"Modality_4";"Date_4";"Time_4";"Description_4";"Free_1_4";"Free_2_4";"Free_3_4";"Free_4_4";"Free_5_4";"AccessNr_5";"Modality_5";"Date_5";"Time_5";"Description_5";"Free_1_5";"Free_2_5";"Free_3_5";"Free_4_5";"Free_5_5";"AccessNr_6";"Modality_6";"Date_6";"Time_6";"Description_6";"Free_1_6";"Free_2_6";"Free_3_6";"Free_4_6";"Free_5_6";"AccessNr_7";"Modality_7";"Date_7";"Time_7";"Description_7";"Free_1_7";"Free_2_7";"Free_3_7";"Free_4_7";"Free_5_7";"AccessNr_8";"Modality_8";"Date_8";"Time_8";"Description_8";"Free_1_8";"Free_2_8";"Free_3_8";"Free_4_8";"Free_5_8";"AccessNr_9";"Modality_9";"Date_9";"Time_9";"Description_9";"Free_1_9";"Free_2_9";"Free_3_9";"Free_4_9";"Free_5_9";"AccessNr_10";"Modality_10";"Date_10";"Time_10";"Description_10";"Free_1_10";"Free_2_10";"Free_3_10";"Free_4_10";"Free_5_10";
```

Example of the merge.dat file for the Multi Patient Label

```
"StudyPatientID1 - StudyPatientName1 - StudyPatientSex1 - StudyPatientBirthDay1";"StudyAccessionNumber1 - StudyModality1 - StudyDate1 - StudyTime1 - StudyDescription1";"Free_1_1 - Free_2_1 - Free_3_1 - Free_4_1 - Free_5_1";"StudyPatientID2 - StudyPatientName2 - StudyPatientSex2 - StudyPatientBirthDay2";"StudyAccessionNumber2 - StudyModality2 - StudyDate2 - StudyTime2 - StudyDescription2";"Free_1_2 - Free_2_2 - Free_3_2 - Free_4_2 - Free_5_2";"StudyPatientID3 - StudyPatientName3 - StudyPatientSex3 - StudyPatientBirthDay3";"StudyAccessionNumber3 - StudyModality3 - StudyDate3 - StudyTime3 - StudyDescription3";"Free_1_3 - Free_2_3 - Free_3_3 - Free_4_3 - Free_5_3";"StudyPatientID4 - StudyPatientName4 - StudyPatientSex4 - StudyPatientBirthDay4";"StudyAccessionNumber4 - StudyModality4 - StudyDate4 - StudyTime4 - StudyDescription4";"Free_1_4 - Free_2_4 - Free_3_4 - Free_4_4 - Free_5_4";"StudyPatientID5 - StudyPatientName5 - StudyPatientSex5 - StudyPatientBirthDay5";"StudyAccessionNumber5 - StudyModality5 - StudyDate5 - StudyTime5 - StudyDescription5";"Free_1_5 - Free_2_5 - Free_3_5 - Free_4_5 - Free_5_5";"StudyPatientID6 - StudyPatientName6 - StudyPatientSex6 - StudyPatientBirthDay6";"StudyAccessionNumber6 - StudyModality6 - StudyDate6 - StudyTime6 - StudyDescription6";"Free_1_6 - Free_2_6 - Free_3_6 - Free_4_6 - Free_5_6";"StudyPatientID7 - StudyPatientName7 - StudyPatientSex7 - StudyPatientBirthDay7";"StudyAccessionNumber7 - StudyModality7 - StudyDate7 - StudyTime7 - StudyDescription7";"Free_1_7 - Free_2_7 - Free_3_7 - Free_4_7 - Free_5_7";"StudyPatientID8 - StudyPatientName8 - StudyPatientSex8 - StudyPatientBirthDay8";"StudyAccessionNumber8 - StudyModality8 - StudyDate8 - StudyTime8 - StudyDescription8";"Free_1_8 - Free_2_8 - Free_3_8 - Free_4_8 - Free_5_8";"StudyPatientID9 - StudyPatientName9 - StudyPatientSex9 - StudyPatientBirthDay9";"StudyAccessionNumber9 - StudyModality9 - StudyDate9 - StudyTime9 - StudyDescription9";"Free_1_9 - Free_2_9 - Free_3_9 - Free_4_9 - Free_5_9";"StudyPatientID10 - StudyPatientName10 - StudyPatientSex10 - StudyPatientBirthDay10";"StudyAccessionNumber10 - StudyModality10 - StudyDate10 - StudyTime10 - StudyDescription10";"Free_1_10 - Free_2_10 - Free_3_10 - Free_4_10 - Free_5_10";
```

Edit the Free fields

The value of the five free fields in the merge file can be change in the "C:\Program Files (x86)\DCMburner x.x.x\DicomGateWay\dicom.sql" file. Be carefully when editing this file, it can cause some problems.

In the Study section you find 5 free fields edit. Simple by adjust the Dicom Tag. Change only the Dicom Tag nothing more.

Example:

- We replace dicom tag 0008,0070 (Manufacturer) into dicom tag 0008,0080 (InstitutionName).
- Change this in { 0x0008, 0x0080, "Free_1", 64, SQL_C_CHAR, DT_STR }, and save.

Study

```
{
  { 0x0020, 0x000d, "StudyInstanceUID", 64, SQL_C_CHAR, DT_UI },
  { 0x0008, 0x0020, "StudyDate", 8, SQL_C_DATE, DT_DATE },
  { 0x0008, 0x0030, "StudyTime", 16, SQL_C_CHAR, DT_TIME },
  { 0x0020, 0x0010, "StudyID", 16, SQL_C_CHAR, DT_STR },
  { 0x0008, 0x1030, "StudyDescription", 64, SQL_C_CHAR, DT_STR },
  { 0x0008, 0x0050, "AccessionNumber", 16, SQL_C_CHAR, DT_STR },
  { 0x0008, 0x0090, "ReferPhysician", 64, SQL_C_CHAR, DT_STR },
  { 0x0010, 0x1010, "PatientsAge", 16, SQL_C_CHAR, DT_STR },
  { 0x0010, 0x1030, "PatientsWeight", 16, SQL_C_CHAR, DT_STR },
  { 0x0008, 0x0061, "StudyModality", 64, SQL_C_CHAR, DT_STR },
  { 0x0008, 0x1010, "StationName", 16, SQL_C_CHAR, DT_STR },
  { 0x0008, 0x1040, "InstitutionalDepartmentName", 64, SQL_C_CHAR, DT_STR },
  { 0x0010, 0x0010, "PatientName", 64, SQL_C_CHAR, DT_STR },
  { 0x0010, 0x0030, "PatientBirthDate", 8, SQL_C_DATE, DT_DATE },
  { 0x0010, 0x0040, "PatientSex", 16, SQL_C_CHAR, DT_STR },
  { 0x0008, 0x0070, "Free_1", 64, SQL_C_CHAR, DT_STR },
  { 0x0008, 0x1030, "Free_2", 64, SQL_C_CHAR, DT_STR },
  { 0x0008, 0x103e, "Free_3", 64, SQL_C_CHAR, DT_STR },
  { 0x0018, 0x0015, "Free_4", 64, SQL_C_CHAR, DT_STR },
  { 0x0008, 0x1040, "Free_5", 64, SQL_C_CHAR, DT_STR },
  { 0x0010, 0x0020, "PatientID", 64, SQL_C_CHAR, DT_STR }
}
```