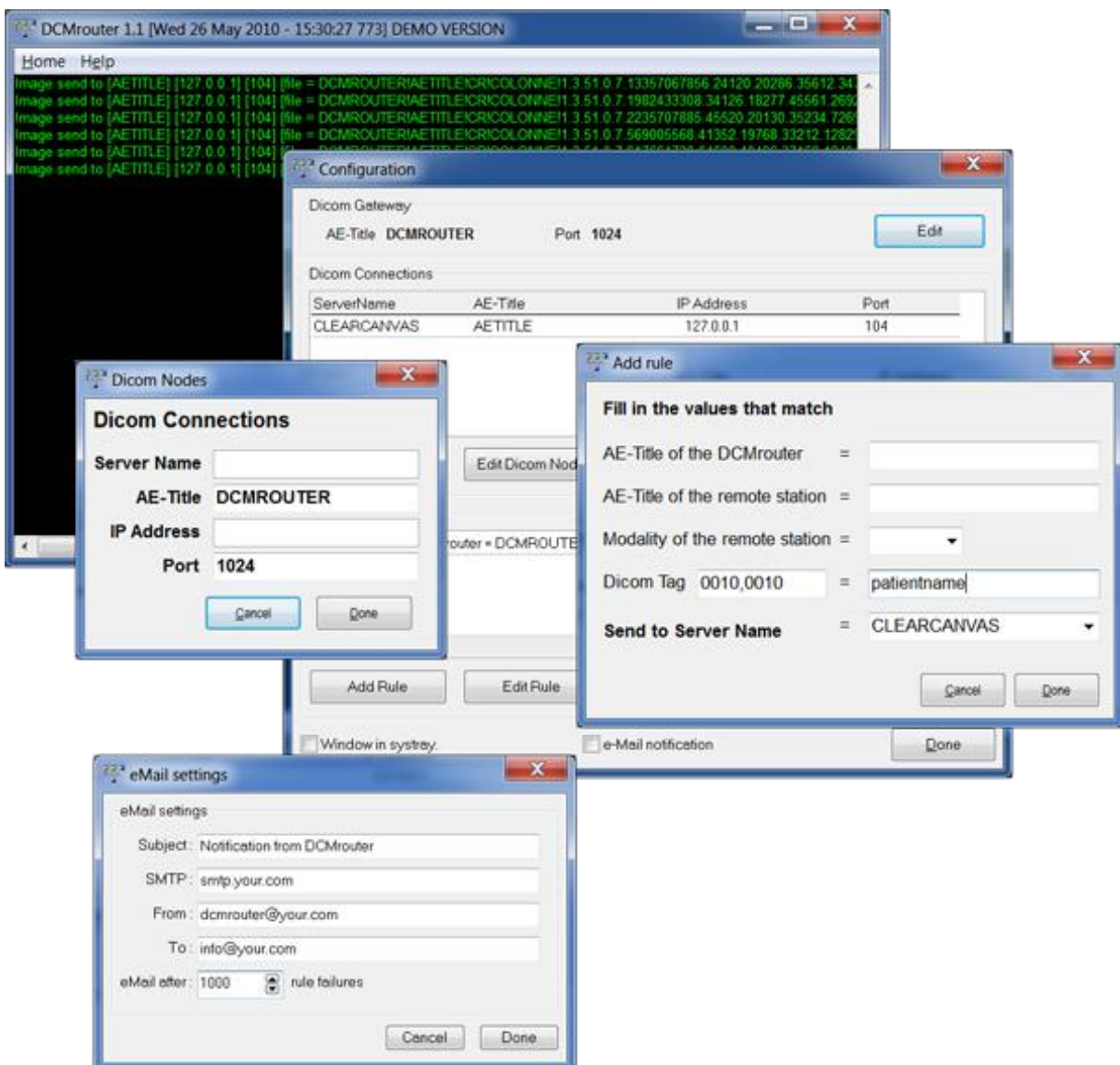


DCMrouter version 1.1

Solution Overview

Sup-C has developed the intelligent DICOM router. This software automates the distribution of DICOM studies to Dicom C-Store compatible devices. DCMrouter automatically simultaneously re-route study data to multiple DICOM nodes with the confidence that data will be accurate when it arrives.



The screenshot displays the DCMrouter 1.1 software interface with several configuration windows open:

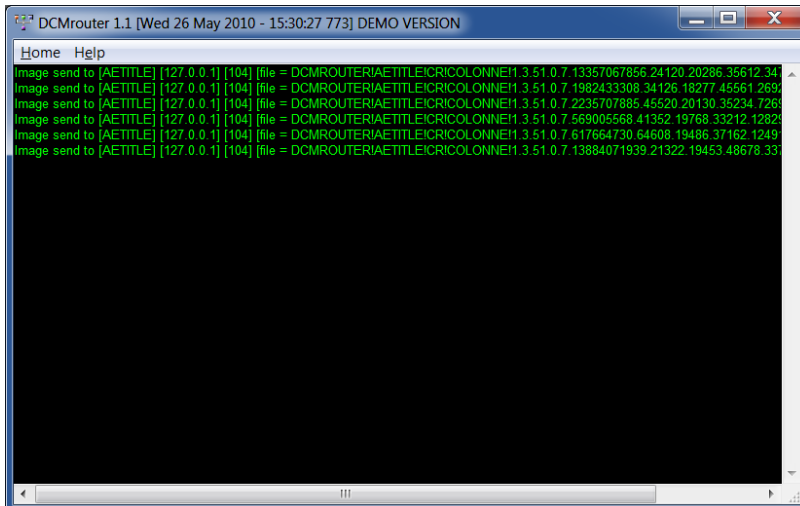
- DCMrouter 1.1 [Wed 26 May 2010 - 15:30:27 773] DEMO VERSION**: The main application window showing a log of image send operations to [AETITLE] [127.0.0.1] [104].
- Configuration**: A window showing the Dicom Gateway settings (AE-Title: DCMROUTER, Port: 1024) and a table of Dicom Connections.

ServerName	AE-Title	IP Address	Port
CLEARCANVAS	AETITLE	127.0.0.1	104
- Dicom Nodes**: A window for adding or editing Dicom nodes with fields for Server Name, AE-Title (DCMROUTER), IP Address, and Port (1024).
- Add rule**: A window for defining routing rules. It includes fields for AE-Title of the DCMrouter, AE-Title of the remote station, Modality of the remote station, Dicom Tag (0010,0010) with a value of patientname, and Send to Server Name (CLEARCANVAS).
- eMail settings**: A window for configuring email notifications, including Subject (Notification from DCMrouter), SMTP (smtp.your.com), From (dcmrouter@your.com), To (info@your.com), and eMail after (1000 rule failures).

Software Overview

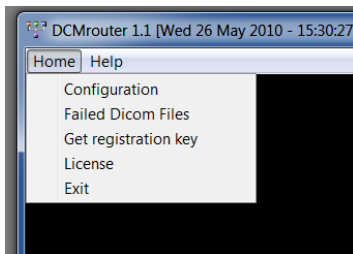
Main screen

- Realtime Dicom log on screen
- Text Color indicator
 - Green text – Routing execute correct regarding the specified rules.
 - Red text – Problem with the routing, in most of the cases the Modality Dicom SCP (Service Class Provider) is not running or active. When the modality is switched on, DCMrouter will continue the forwarding of the Dicom Files.
 - Blue text – No routing rules for this Dicom file.

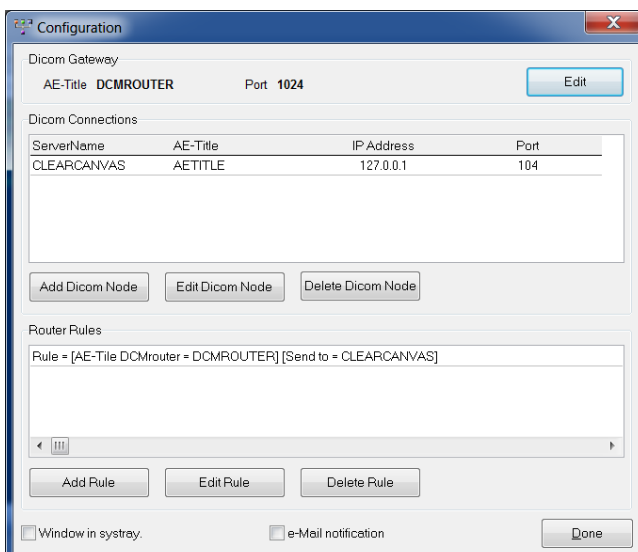


Configuration screen

To open the Configuration screen, click "File" in the menu and select "Configuration".

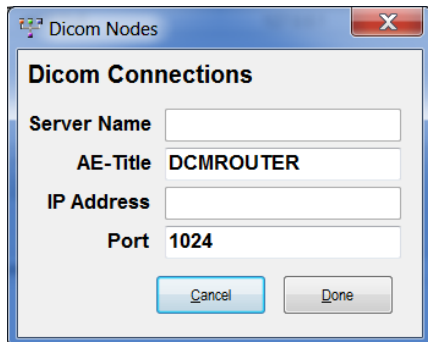


Configuration the Dicom gateway, Dicom nodes (Medical modalities) and rules.



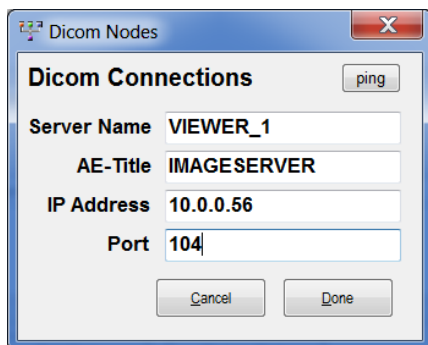
Dicom Gateway

- Server Name : Don't fill in, is disabled.
- AE-Title : Dicom AE-Title of the Gateway.
- IP Address : Don't fill in, is disabled.
- Port : TCP-IP Port number.



Dicom Connecties

- Server Name : Alias for the Dicom Connectie.
- AE-Title : Dicom AE-Title of the modality.
- IP Address : IP Address of the modality.
- Port : TCP-IP Port number.
- Ping : use this button to check your connection with the modality.

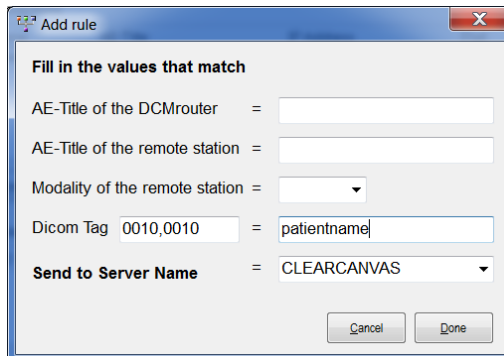
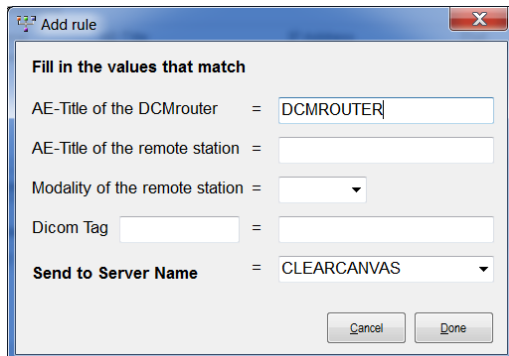


Note : You can also add, edit or delete more Dicom Connections or Dicom nodes.

Router Rules

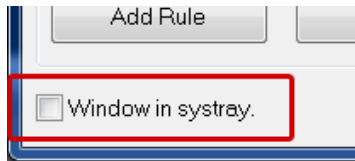
- AE-Title of the DCMrouter : The AE-Title where the Dicom modality sends to.
- AE-Title of the remote staion : The AE-Title of the Dicom modality (remote station).
- Modality of the remote station : Type of the modality, can be CT, MR, DX, CR, US, etc.
- Dicom Tag : First field the Dicom Tag, second the expected result.
- Send to Server Name : Name of the Server where to send if rule is set.

Note : See Configuration of the rules for more information



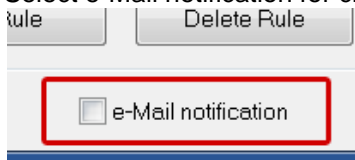
Windows in systray

Check this for putting the application icon in the systray when minimized.



eMail Notification

Select e-Mail notification for change the settings.



- Subject : Put your subject in case the DCMrouter fails to send n times the images.
- SMTP : Your SMTP.
- From : Senders eMail.
- To : eMail of the administrator.
- eMail after : send mail after the routing fails after n times.

